



SPECIALTY HAULAGE SOLUTIONS FOR CONSTRUCTION AND MINING

## PRODUCT INFORMATION BULLETIN

### MEGA DiSCS 2.0 FIELD INSTALLED SPRAY SYSTEM CONFIGURATION INSTRUCTIONS

#### *Applicable to:*

- The MEGA DiSCS® 2.0 Spray system field installed kits



## PRODUCT INFORMATION BULLETIN

### MEGA DiSCS 2.0 Spray System Configuration Instructions

This document has been created to guide a technician through the configuration process of the new MEGA DiSCS 2.0 Spray System.

This information will require the technician to measure the water tank height and confirm the tank options.

Tools required:

Windows based laptop computer

MEGA Supplied ECOM driver and FX Service tool software on thumb drive or Emailed (installed on laptop)

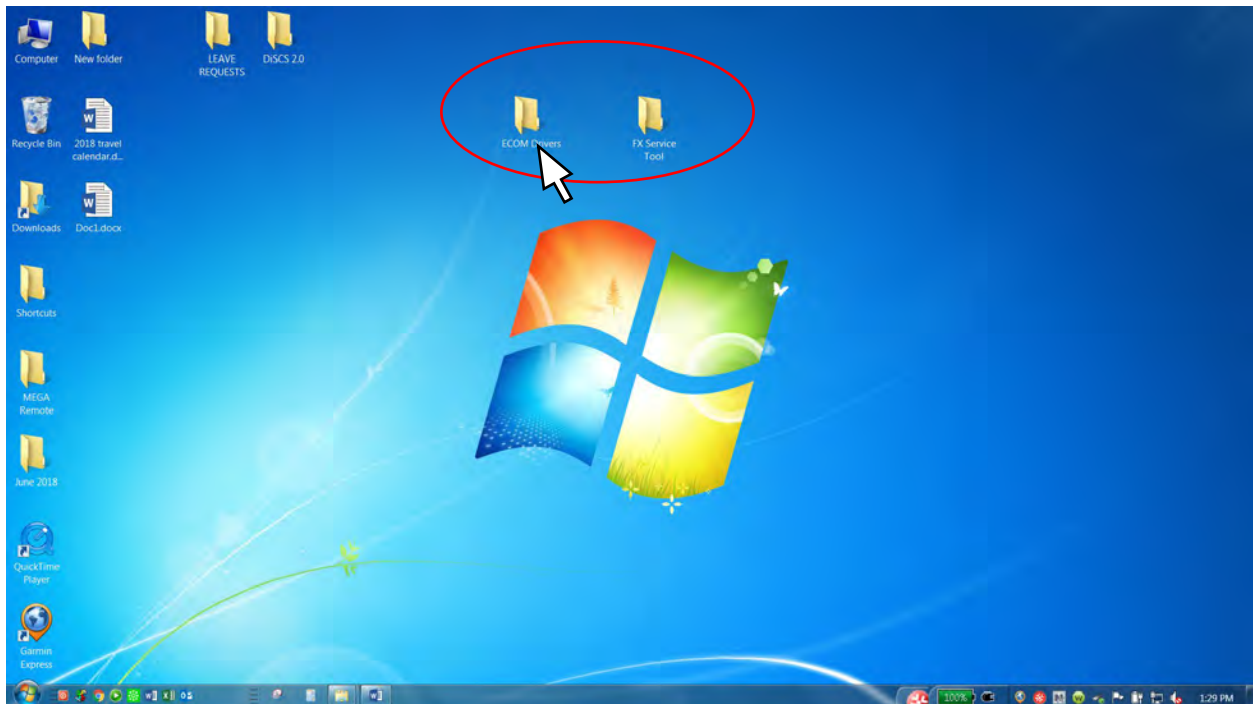
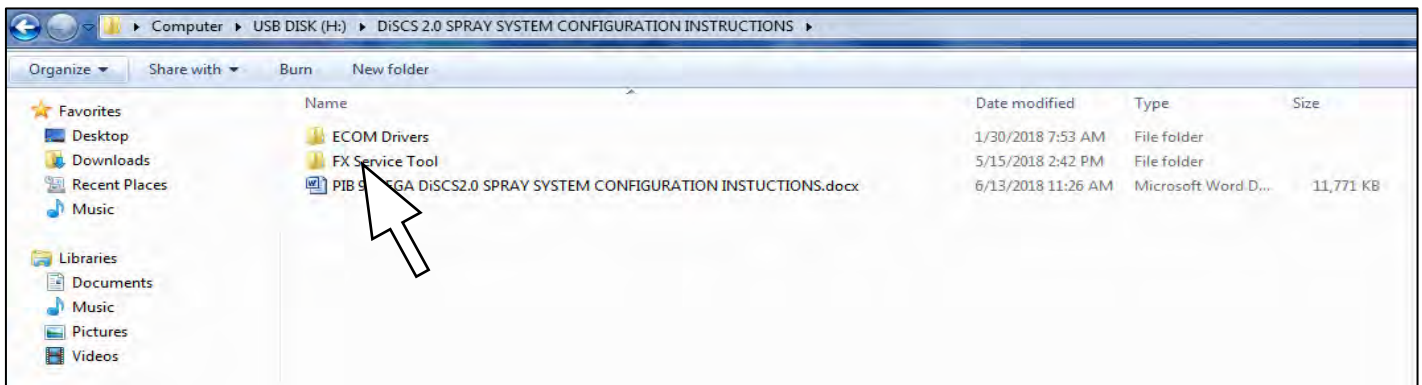
309025 – ECOM cable DiSCS 2.0 (found in kit part number 053367)

Measuring tape (Requirement is in inches of water)

MEGA DiSCS 2.0 spray system installed on operational chassis (System power will be required to configure spray system)

Small pocket screwdriver (to remove and insert switch cover icons)

Insert MEGA Supplied thumb drive and copy the 2 service tools (ECOM Drivers and FX Service Tool) to the laptop



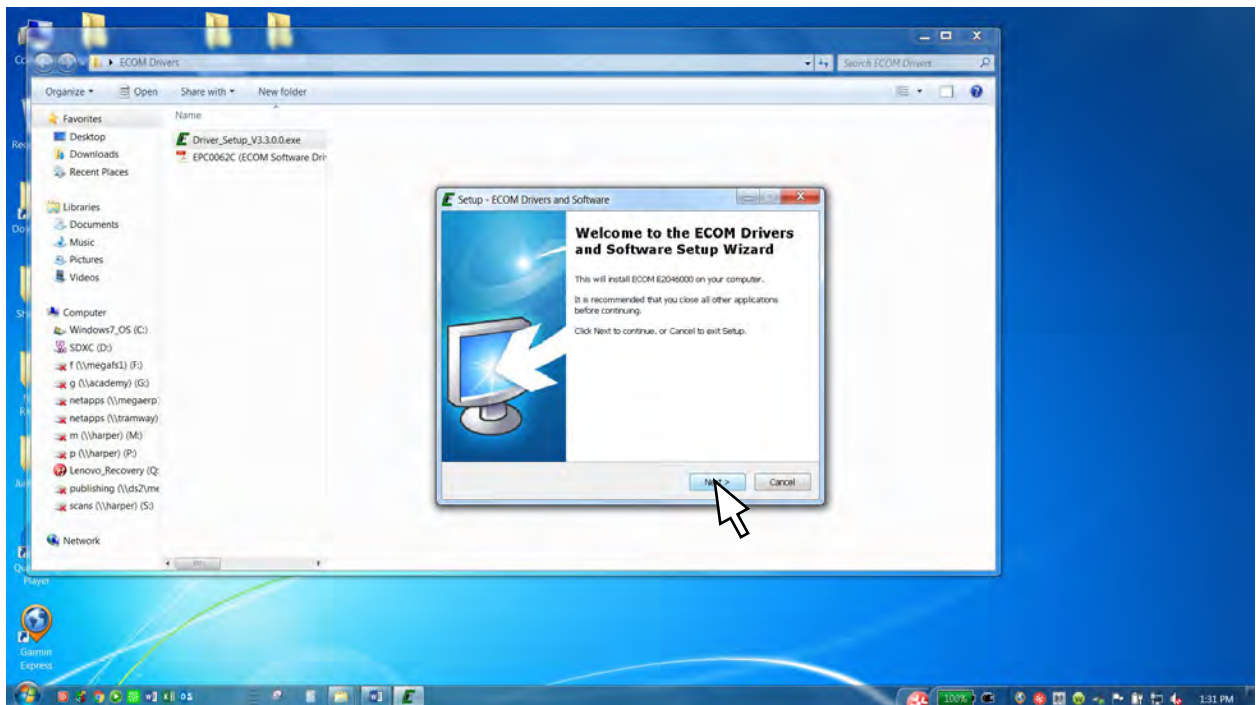
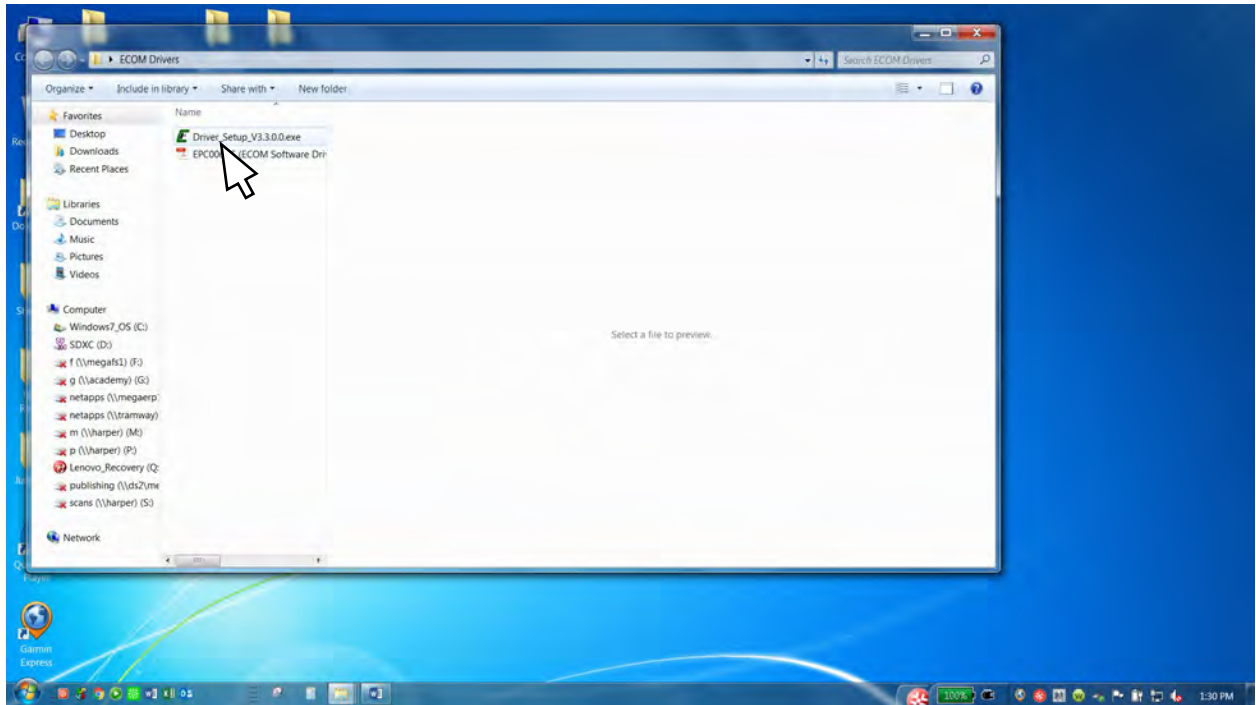


## PRODUCT INFORMATION BULLETIN

### MEGA DiSCS 2.0 Spray System Configuration Instructions

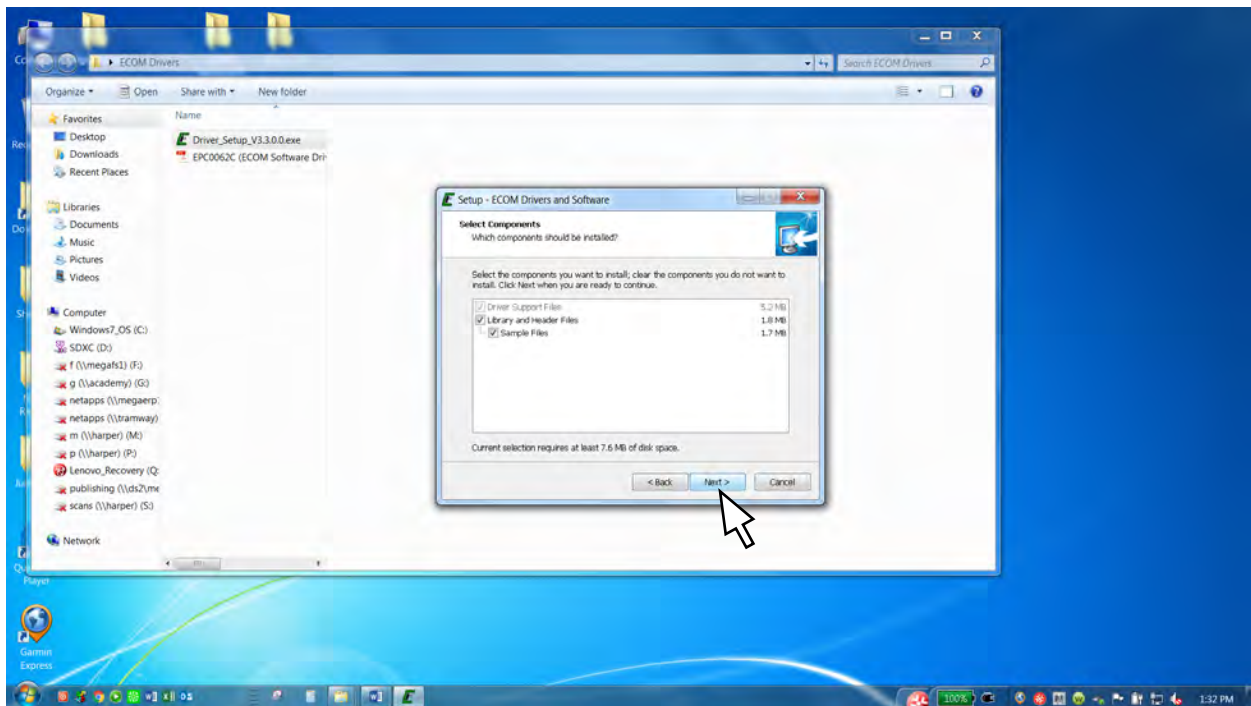
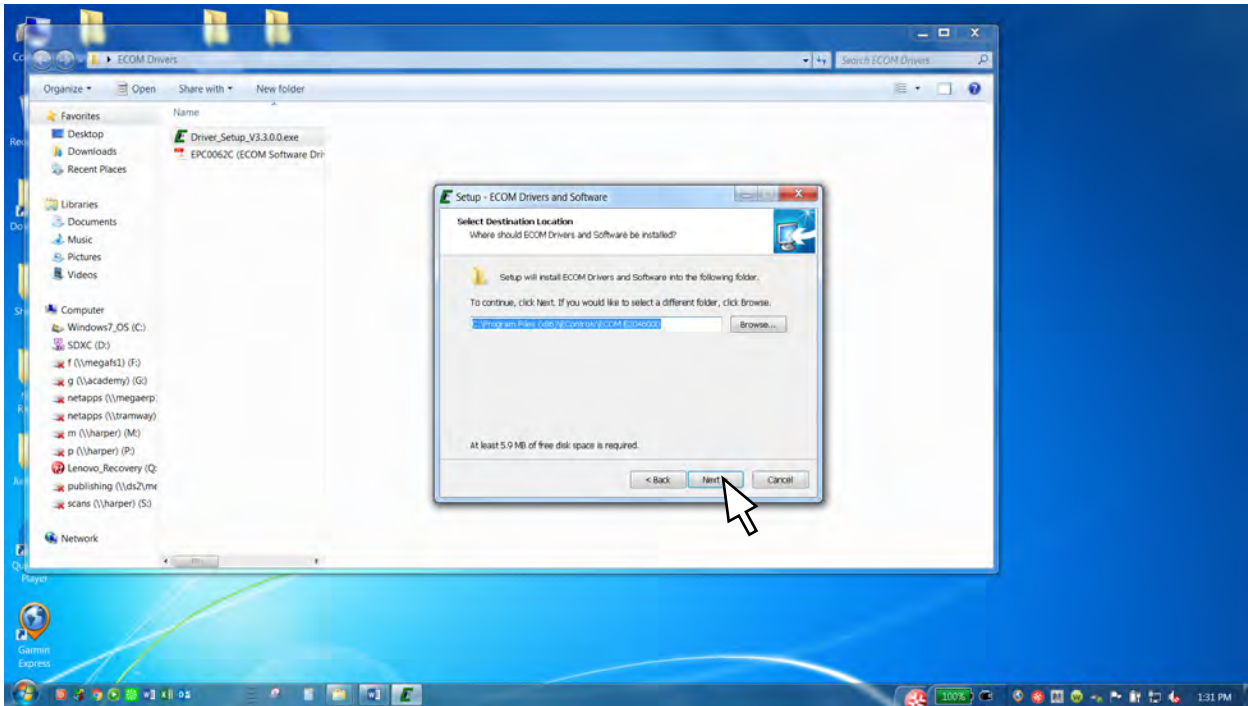
Open the ECOM Driver folder

Click the Driver\_Setup.exe file and follow the installation instructions



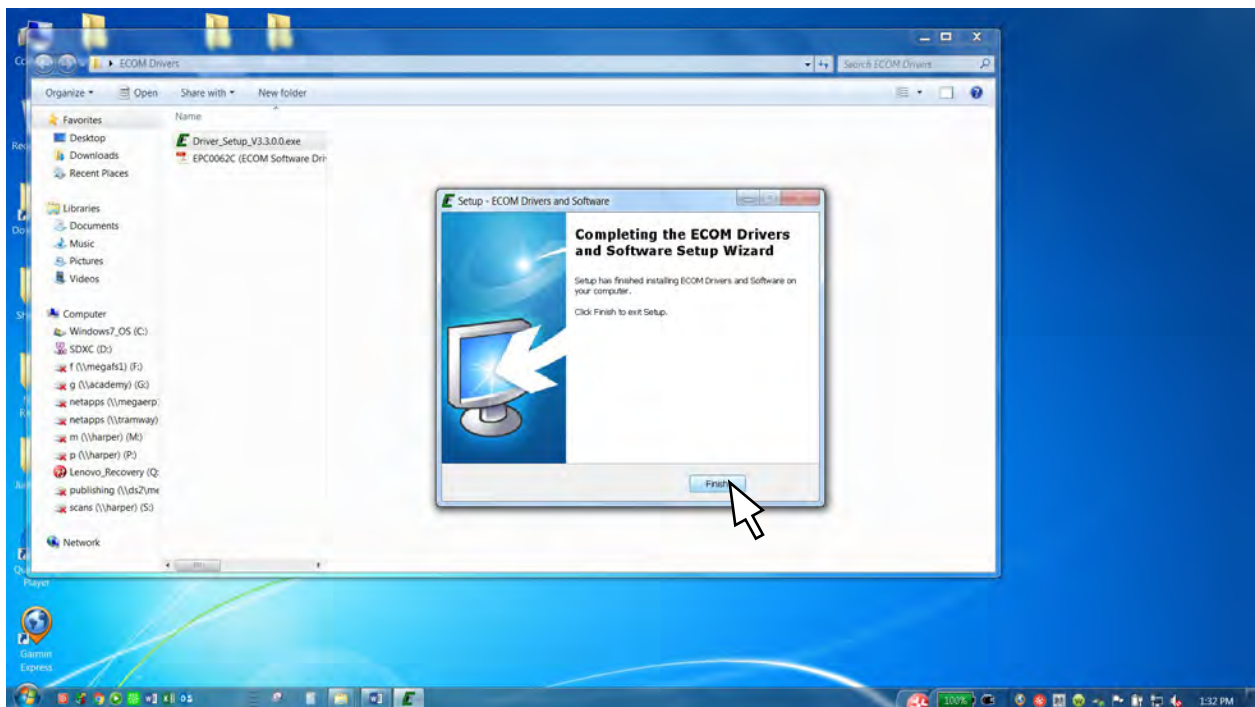
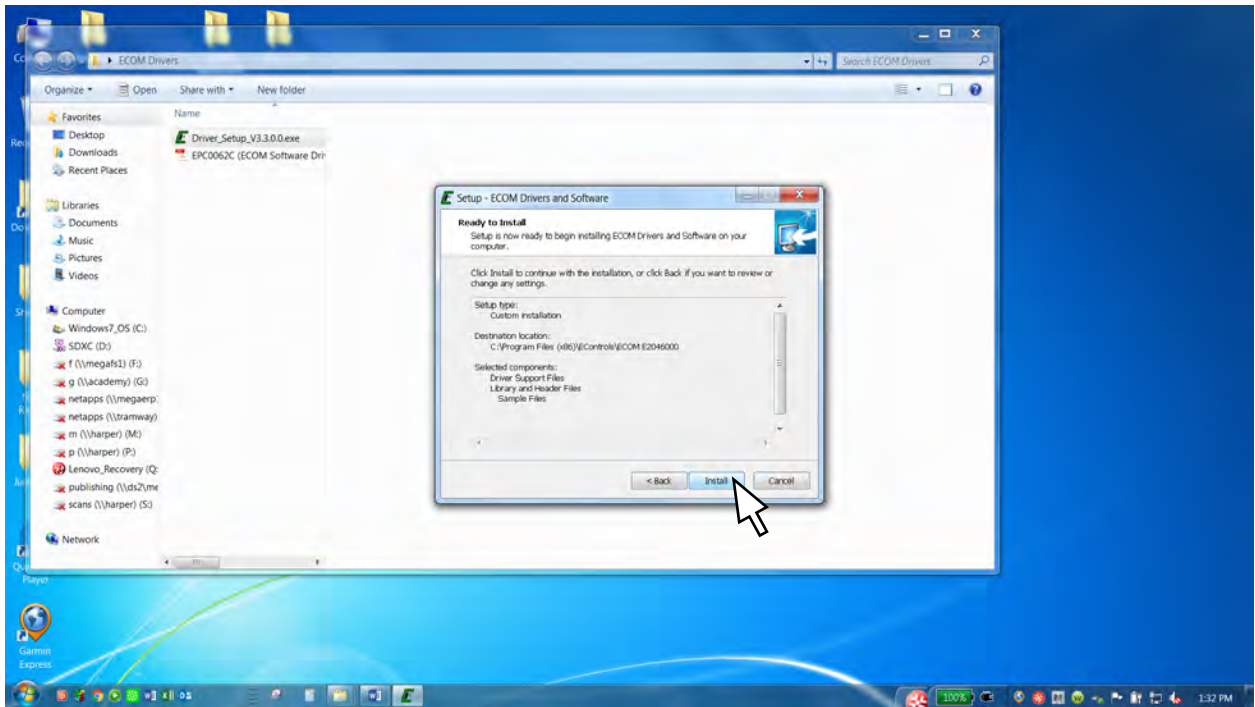
# PRODUCT INFORMATION BULLETIN

## MEGA DiSCS 2.0 Spray System Configuration Instructions



# PRODUCT INFORMATION BULLETIN

## MEGA DiSCS 2.0 Spray System Configuration Instructions

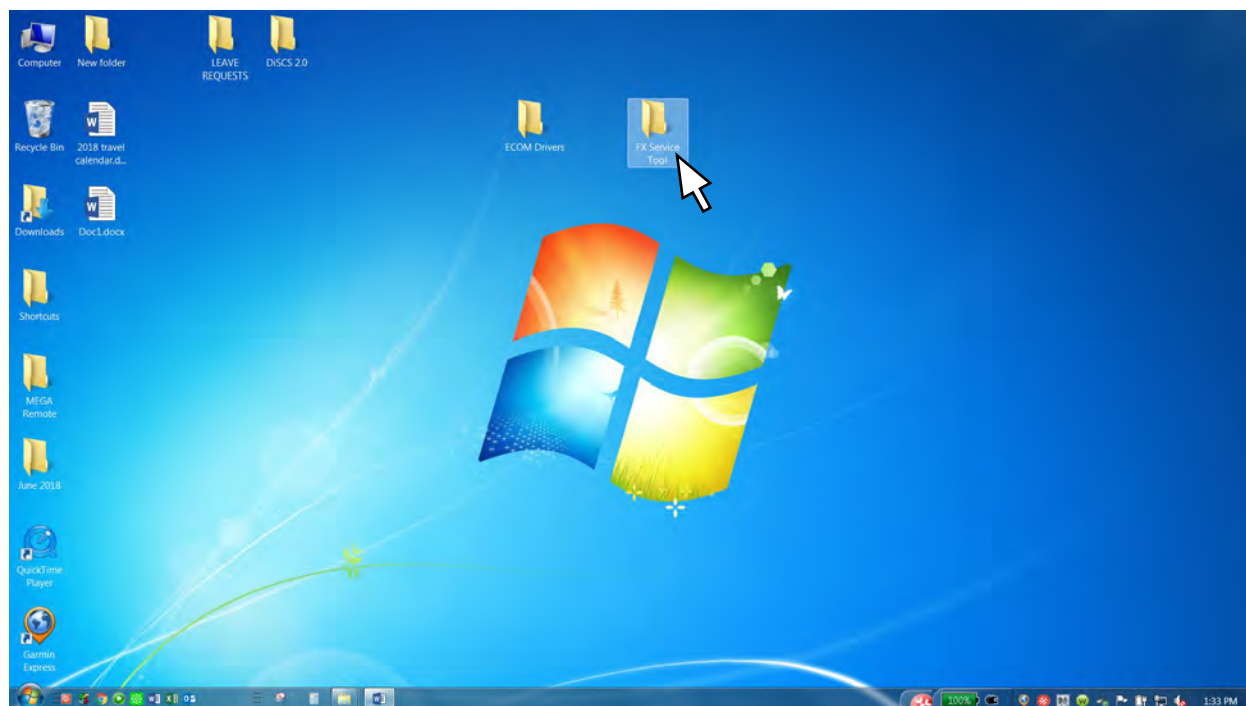




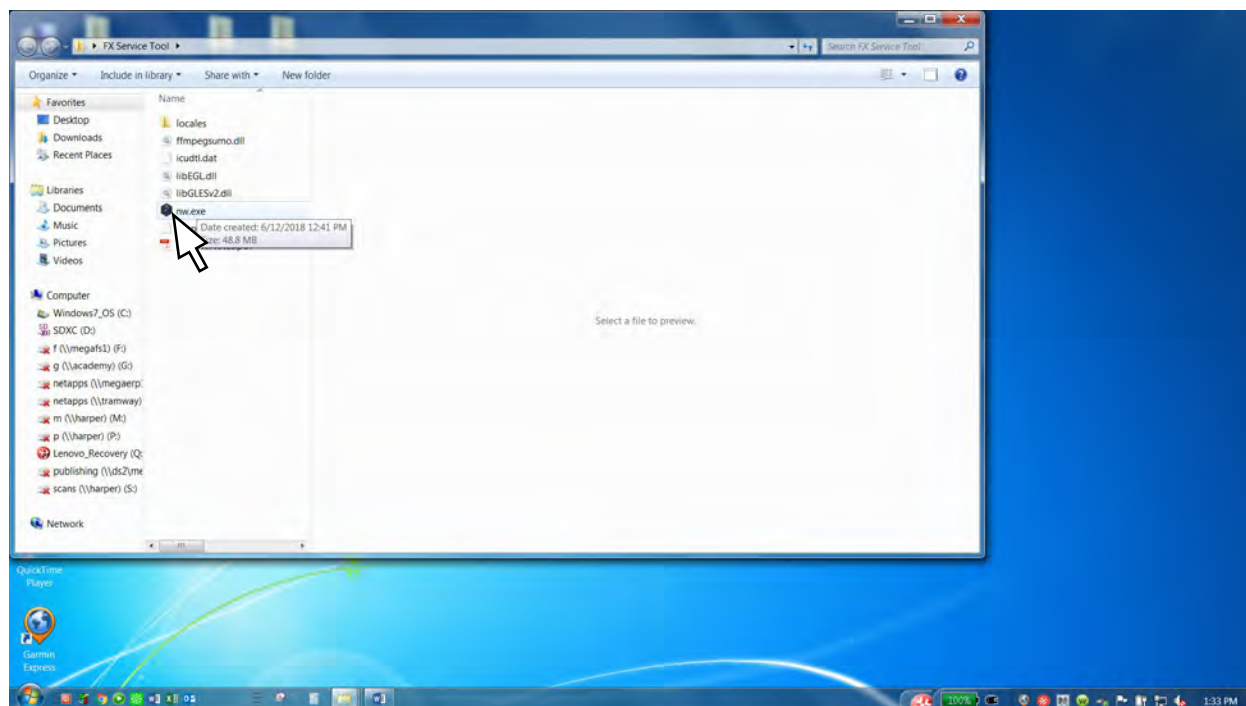
# PRODUCT INFORMATION BULLETIN

## MEGA DiSCS 2.0 Spray System Configuration Instructions

Open the FX Service Tool folder



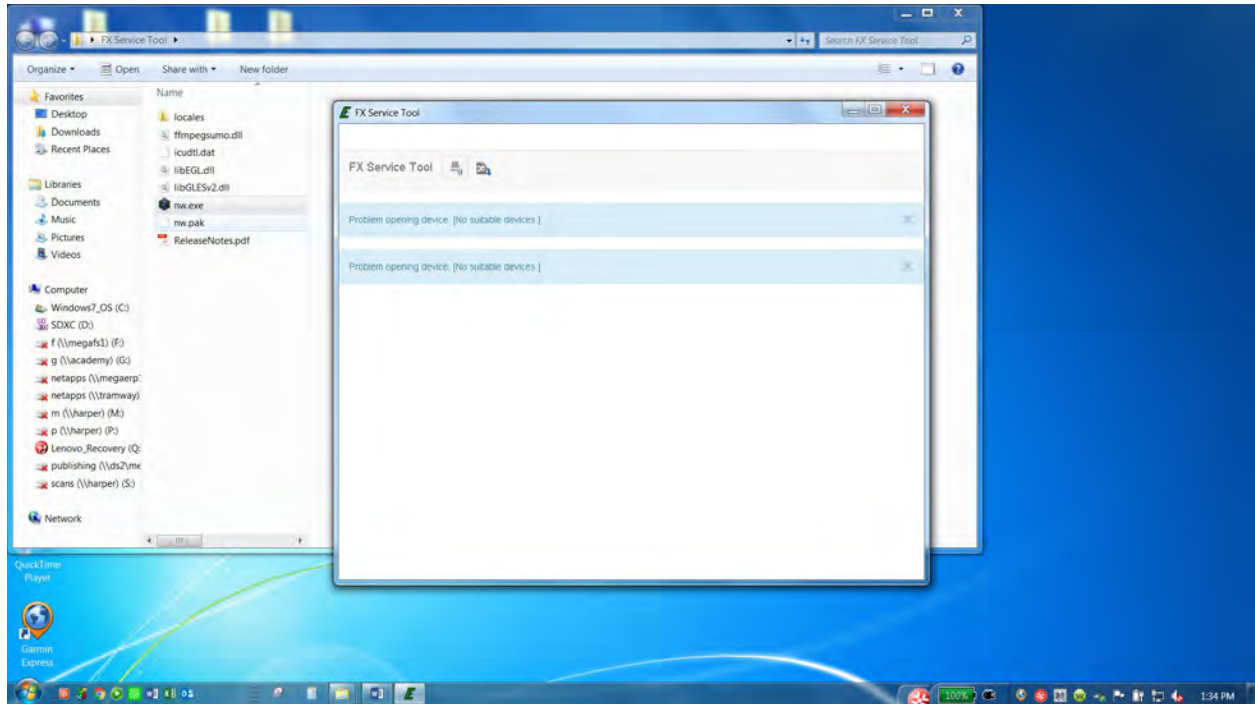
Click on the nw.exe file



PRODUCT INFORMATION BULLETIN  
MEGA DiSCS 2.0 Spray System Configuration Instructions

The Service tool is now ready to use.

Close all windows and plug the ECOM cable into a USB port on the laptop

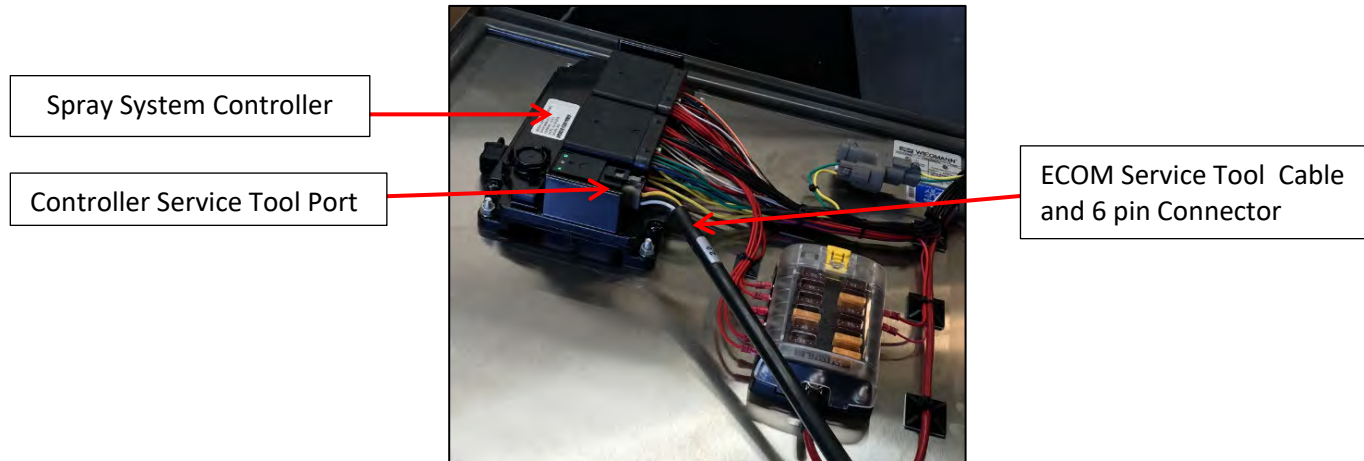


PRODUCT INFORMATION BULLETIN  
MEGA DiSCS 2.0 Spray System Configuration Instructions

Turn laptop computer ON

Remove dust plug from Controller Service Tool Port

Plug ECOM service tool into 6 pin connector on spray system controller (inside of solenoid box lid)



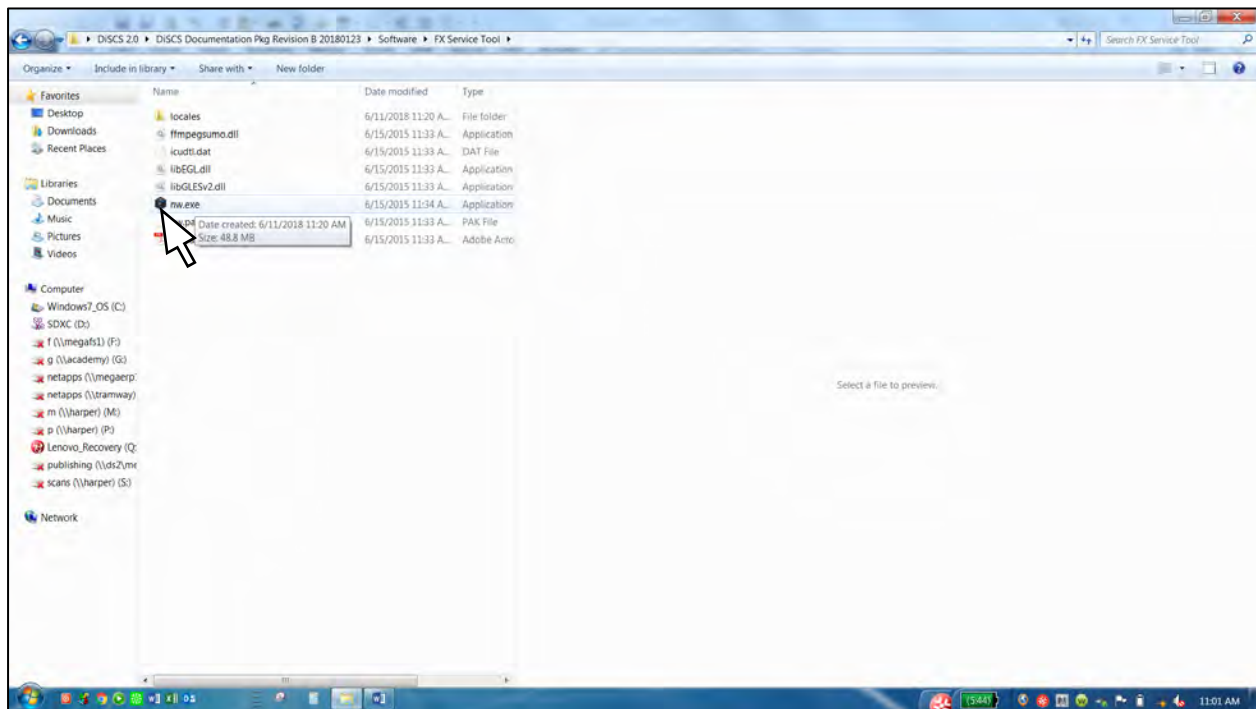
Turn tractor power ON

Turn DiSCS 2.0 Spray System power ON

The switch will light will turn green



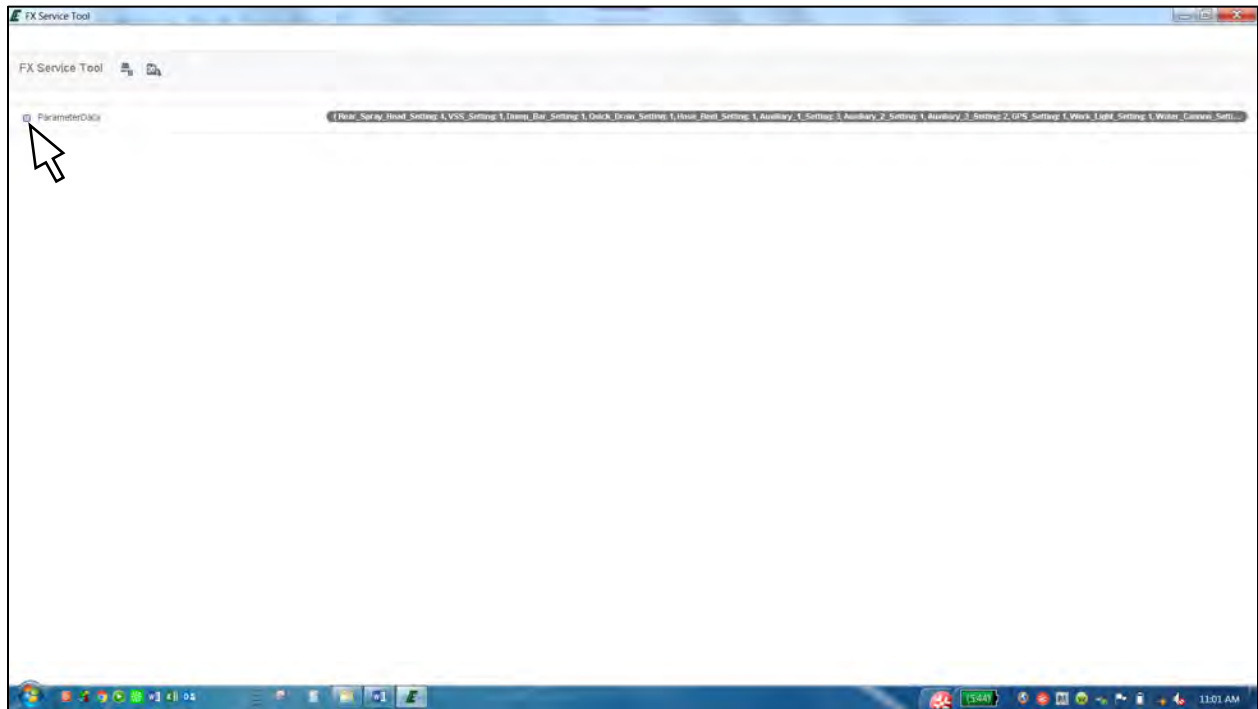
Click on the FX Service tool Folder and click the nw.exe file to open the ECOM service tool



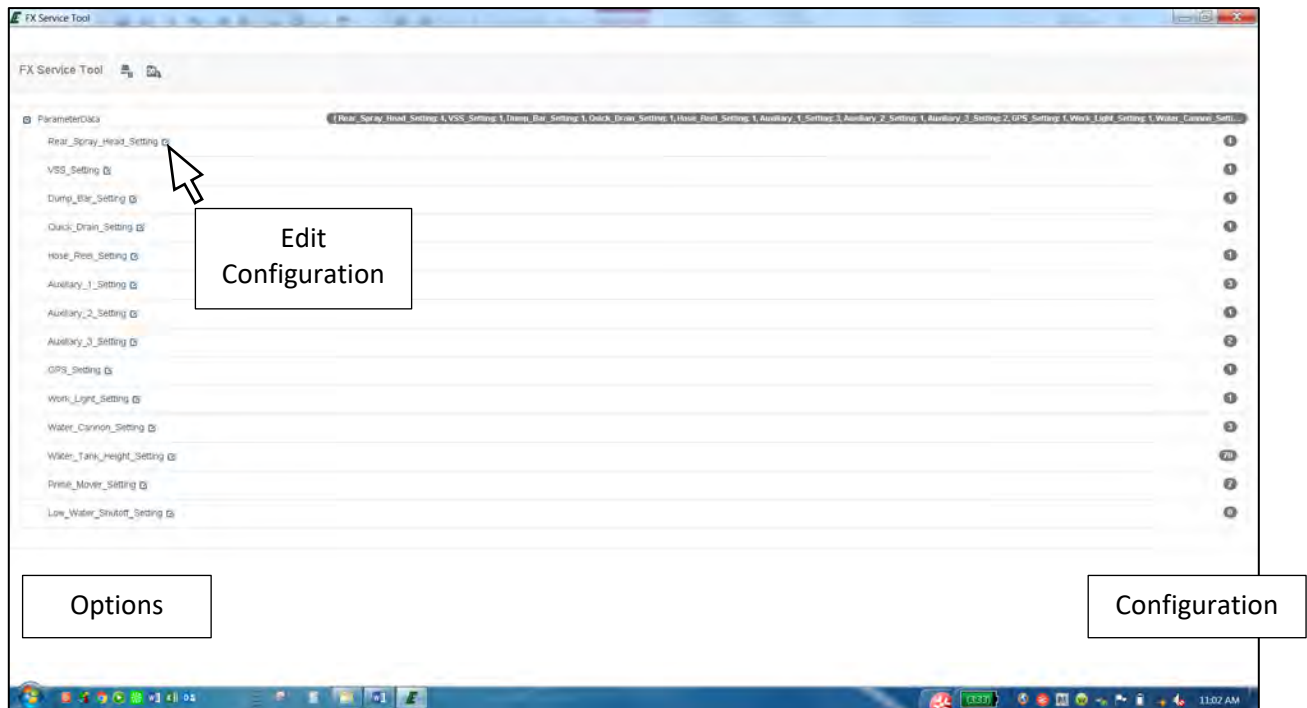


PRODUCT INFORMATION BULLETIN  
MEGA DiSCS 2.0 Spray System Configuration Instructions

The Service Tool is now operational  
Click on the ParameterData expand icon

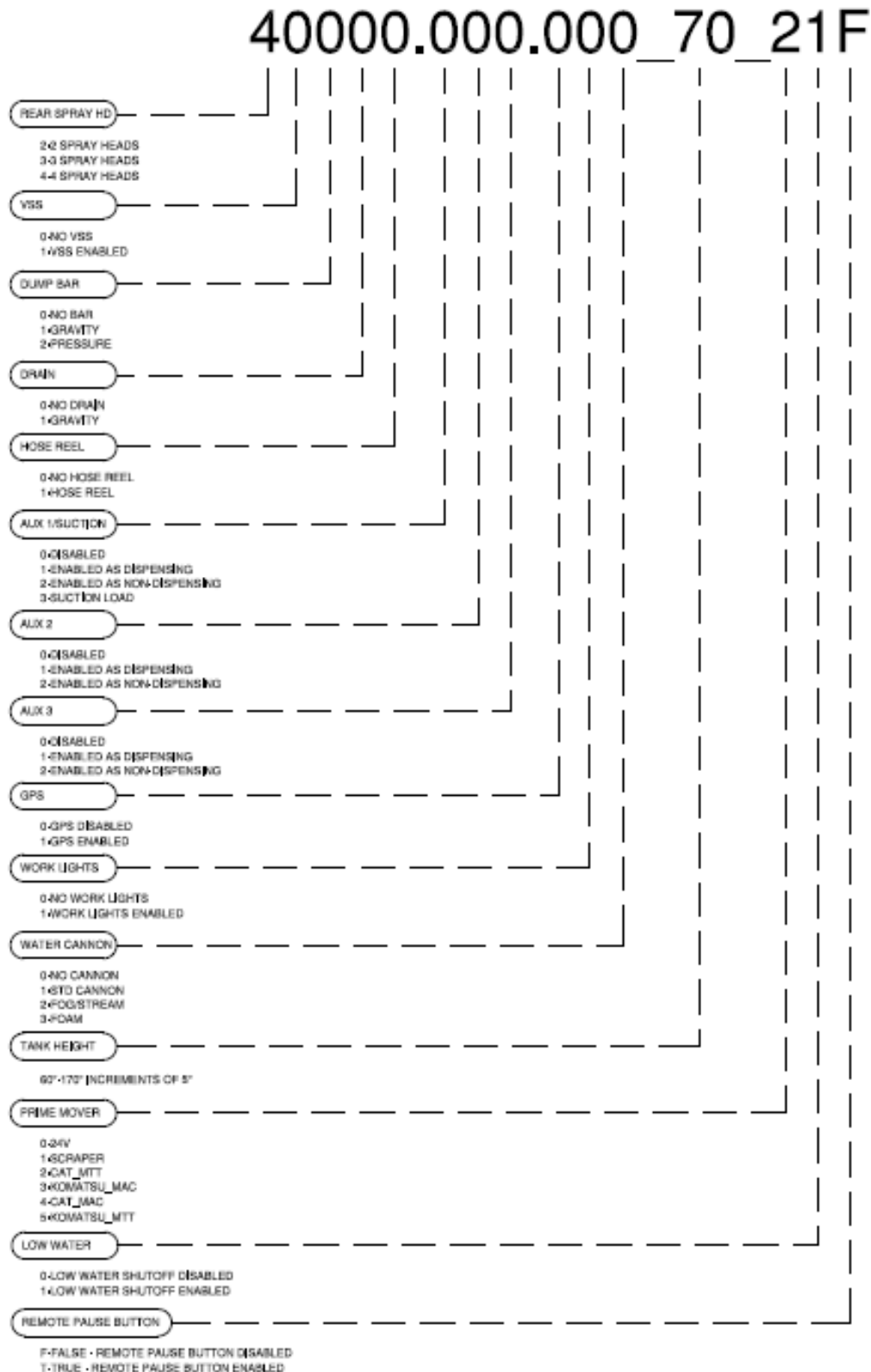


With the configuration menu expanded you can begin the configuration of the spray system.

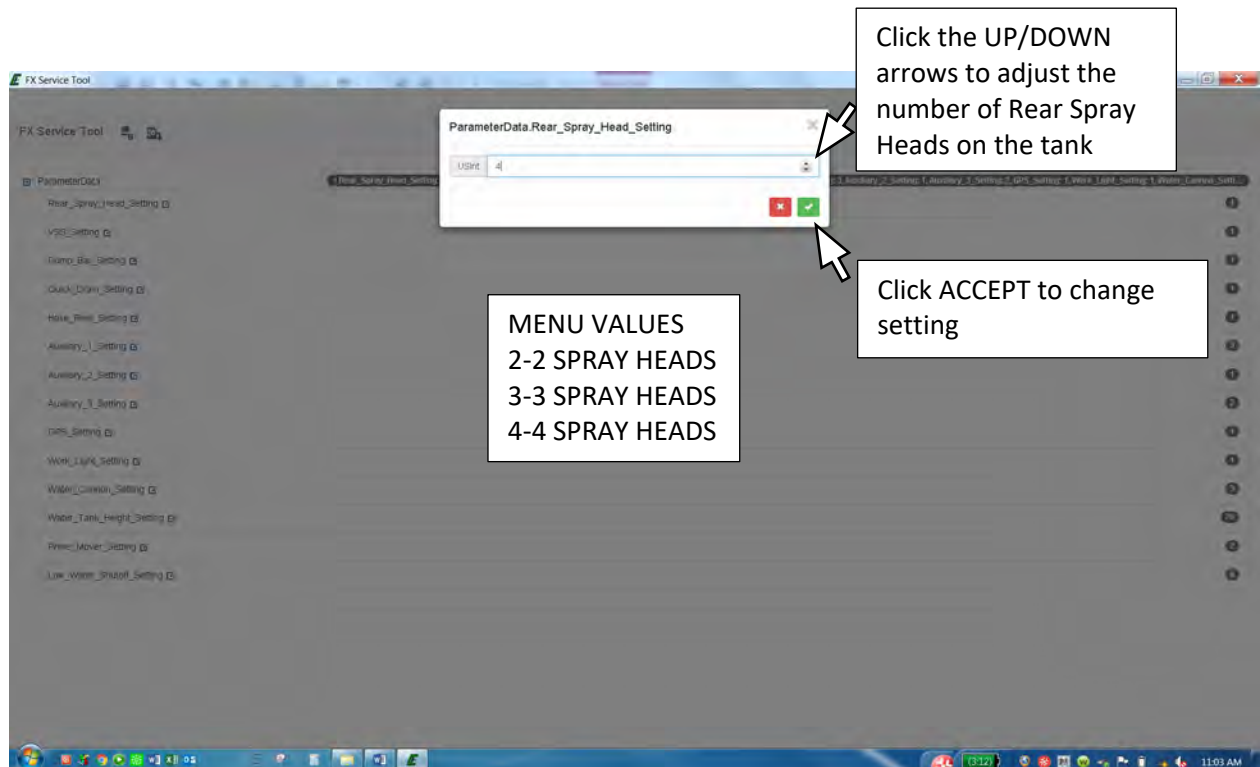
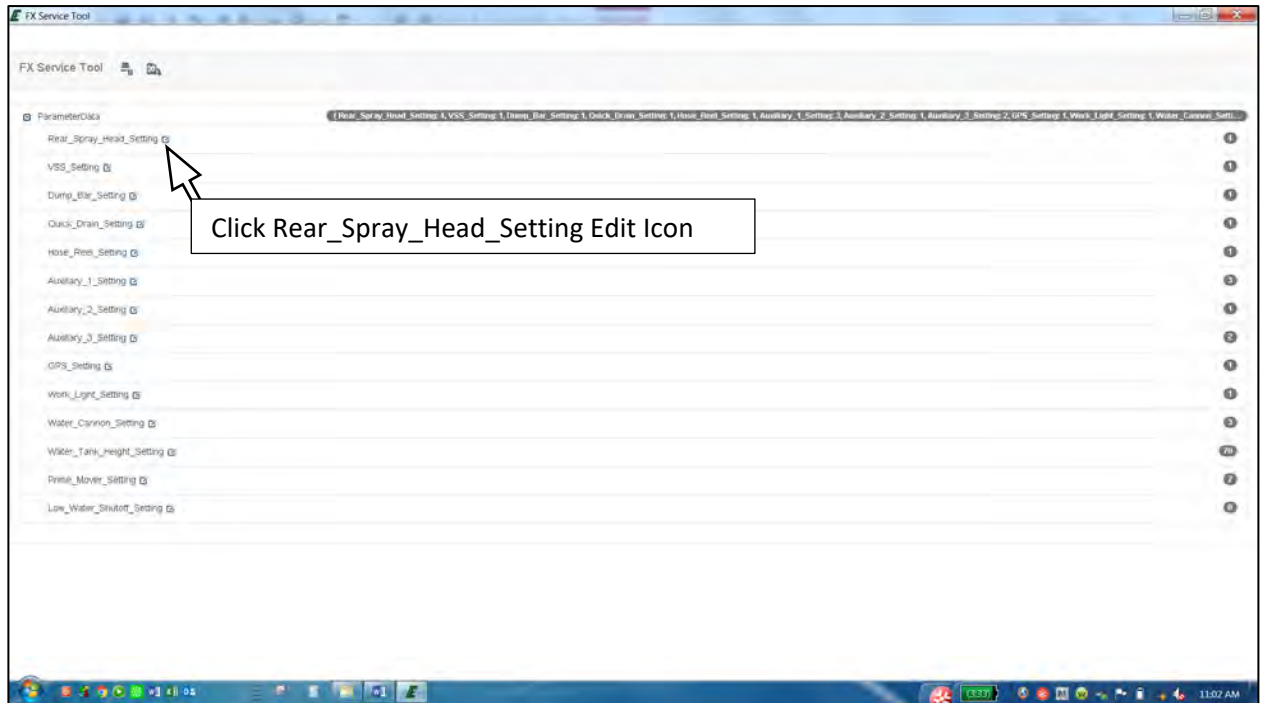


PRODUCT INFORMATION BULLETIN  
MEGA DiSCS 2.0 Spray System Configuration Instructions

Example of spray system configuration line code:

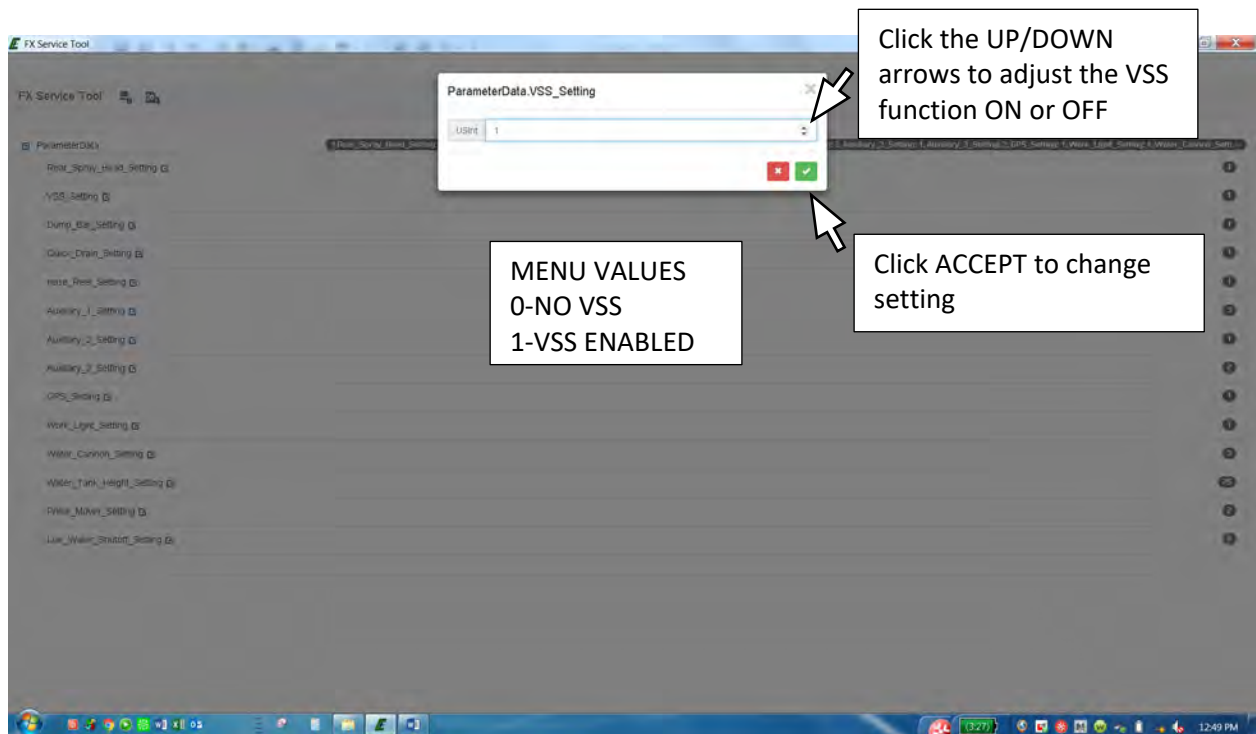
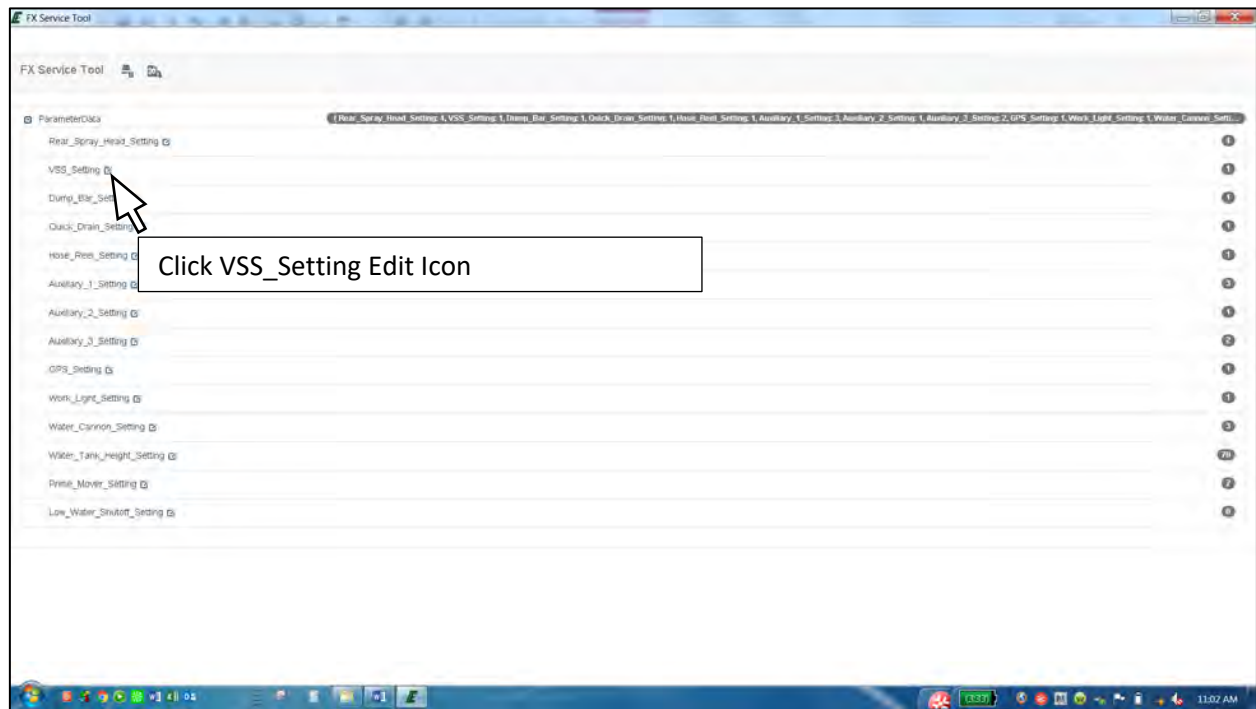


PRODUCT INFORMATION BULLETIN  
MEGA DiSCS 2.0 Spray System Configuration Instructions

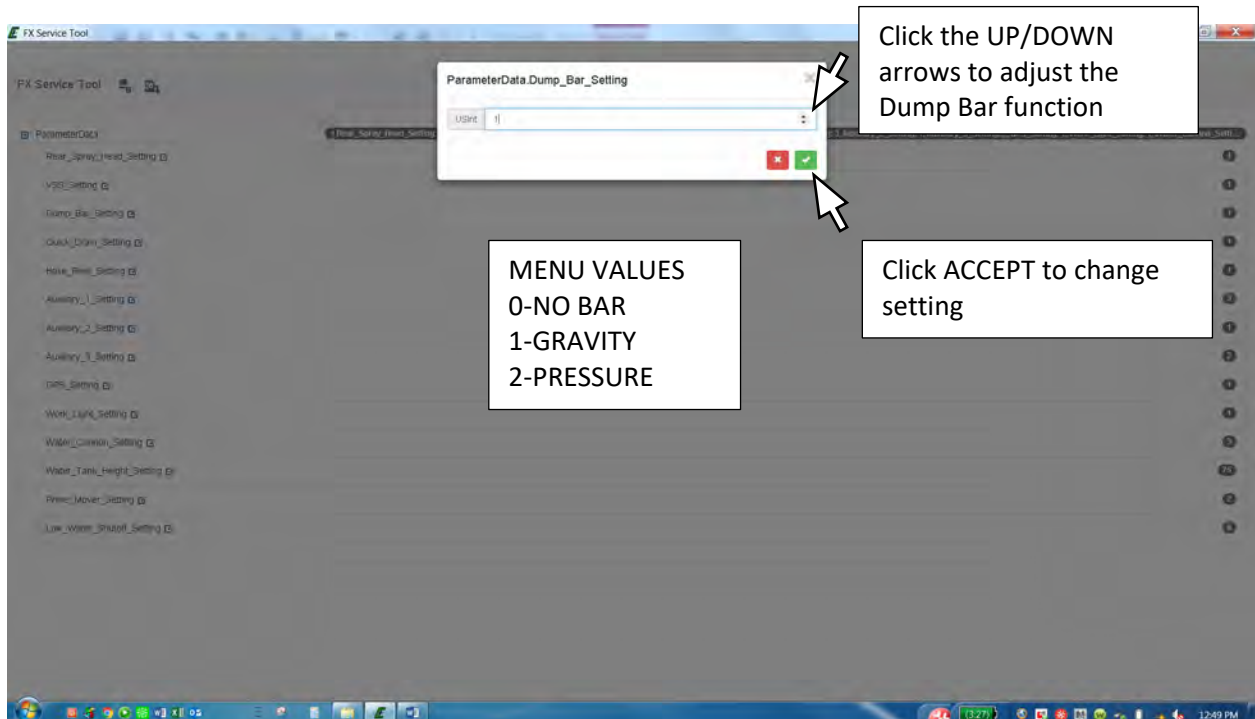
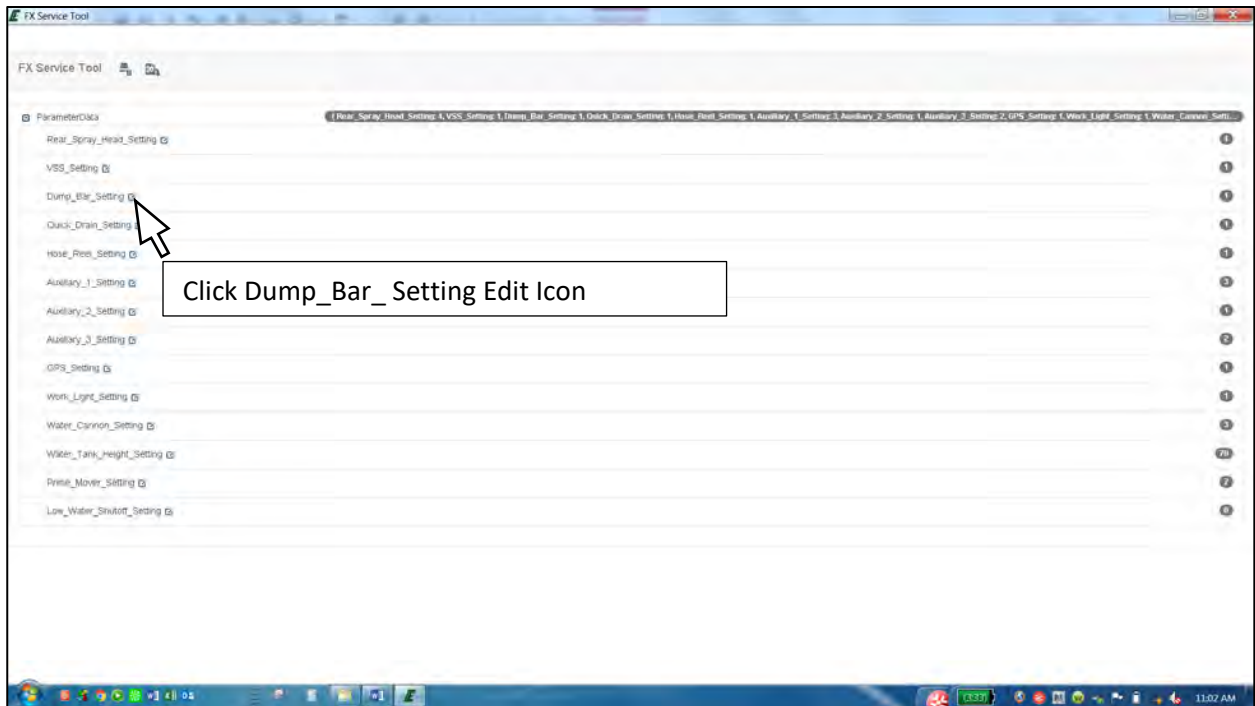




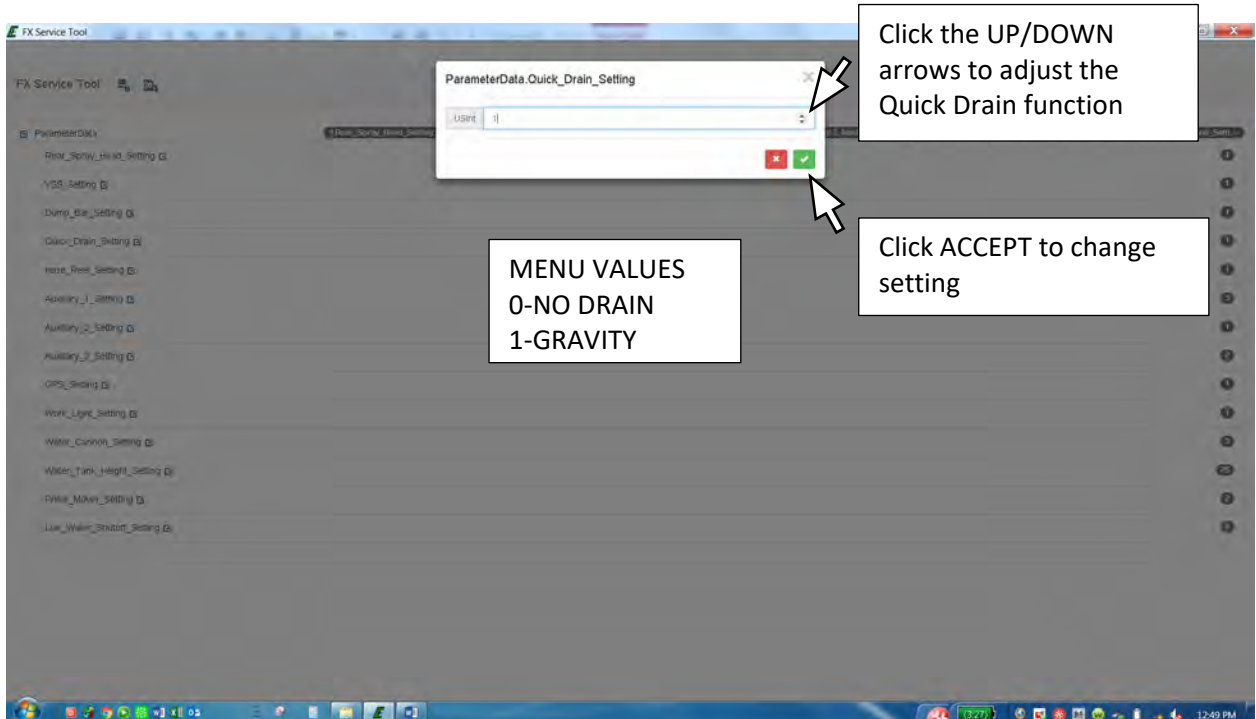
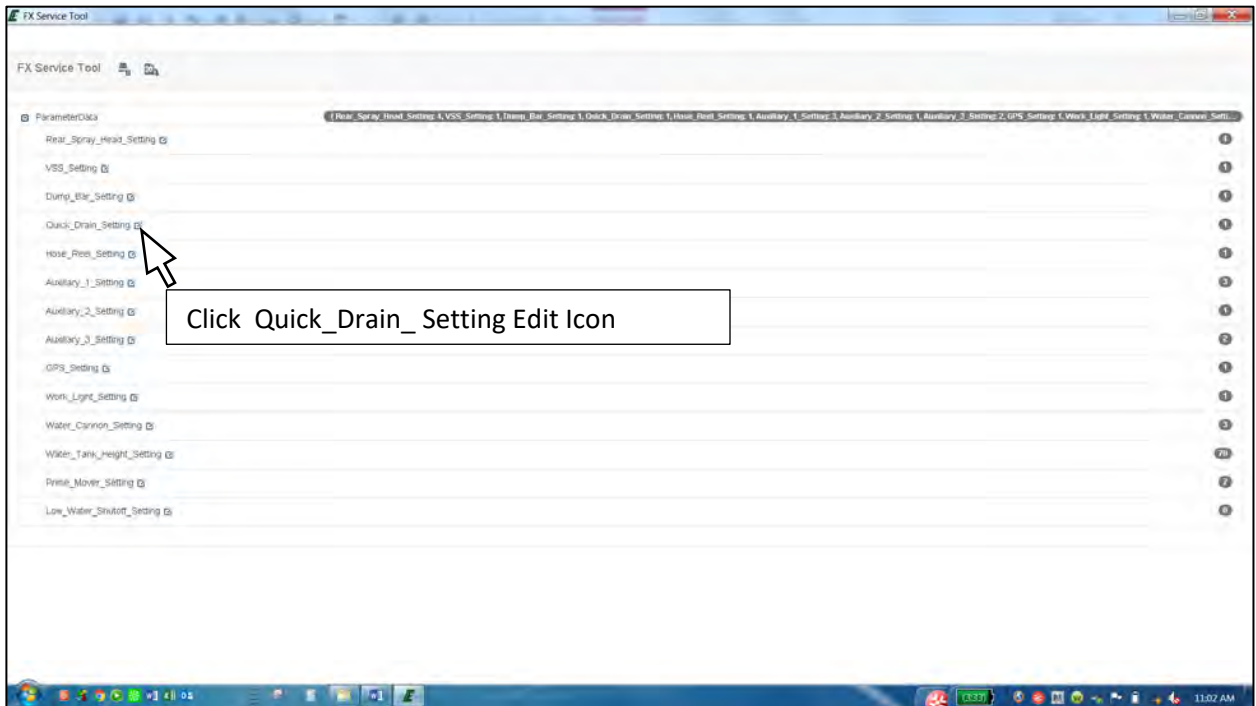
PRODUCT INFORMATION BULLETIN  
MEGA DiSCS 2.0 Spray System Configuration Instructions



PRODUCT INFORMATION BULLETIN  
MEGA DiSCS 2.0 Spray System Configuration Instructions

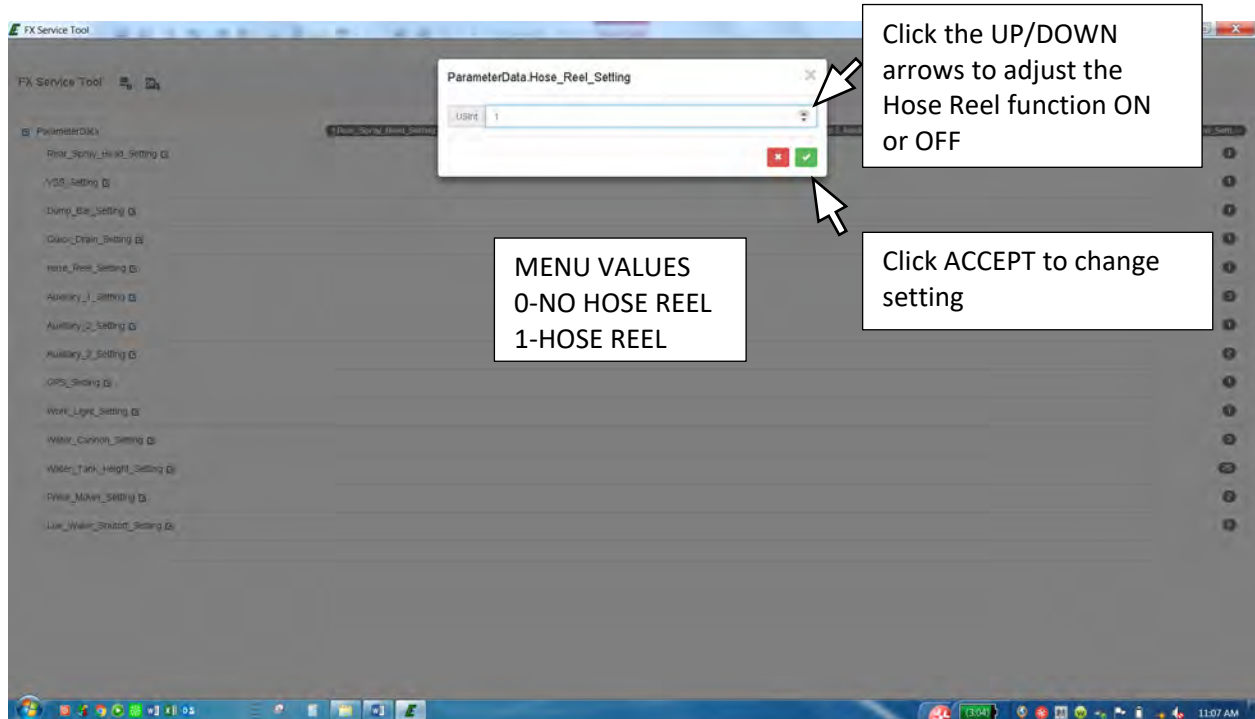
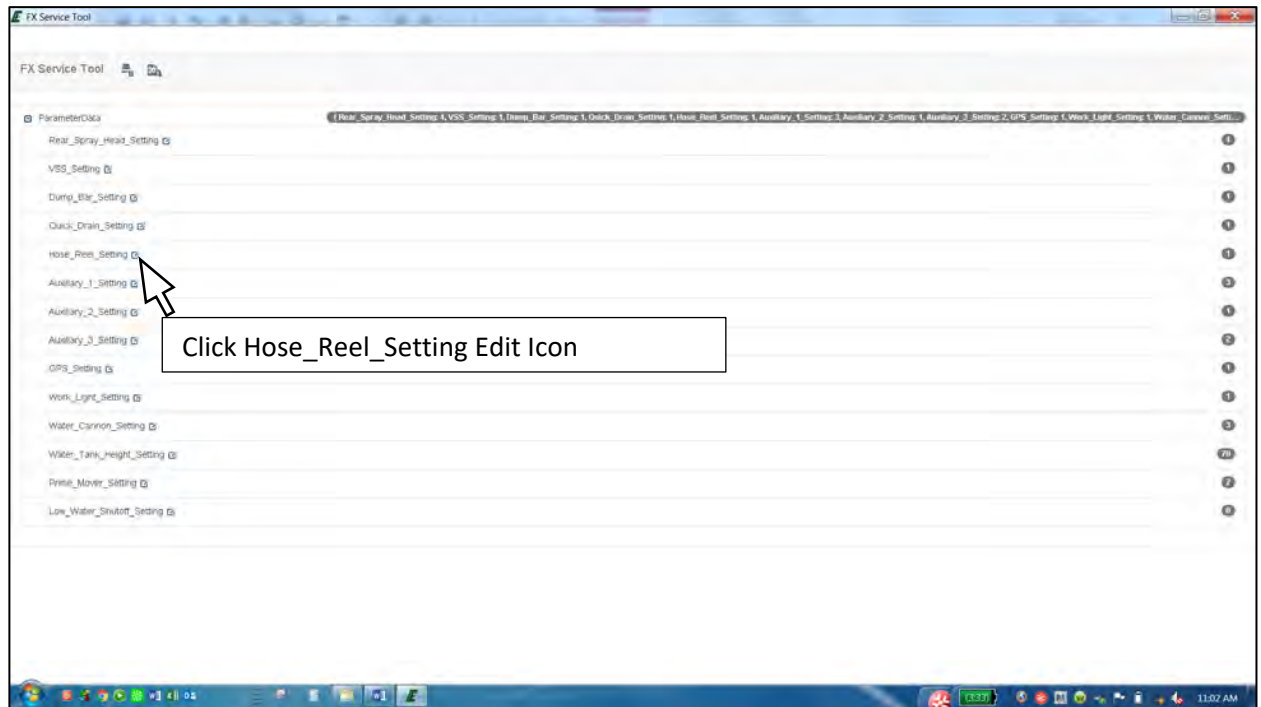


PRODUCT INFORMATION BULLETIN  
MEGA DiSCS 2.0 Spray System Configuration Instructions

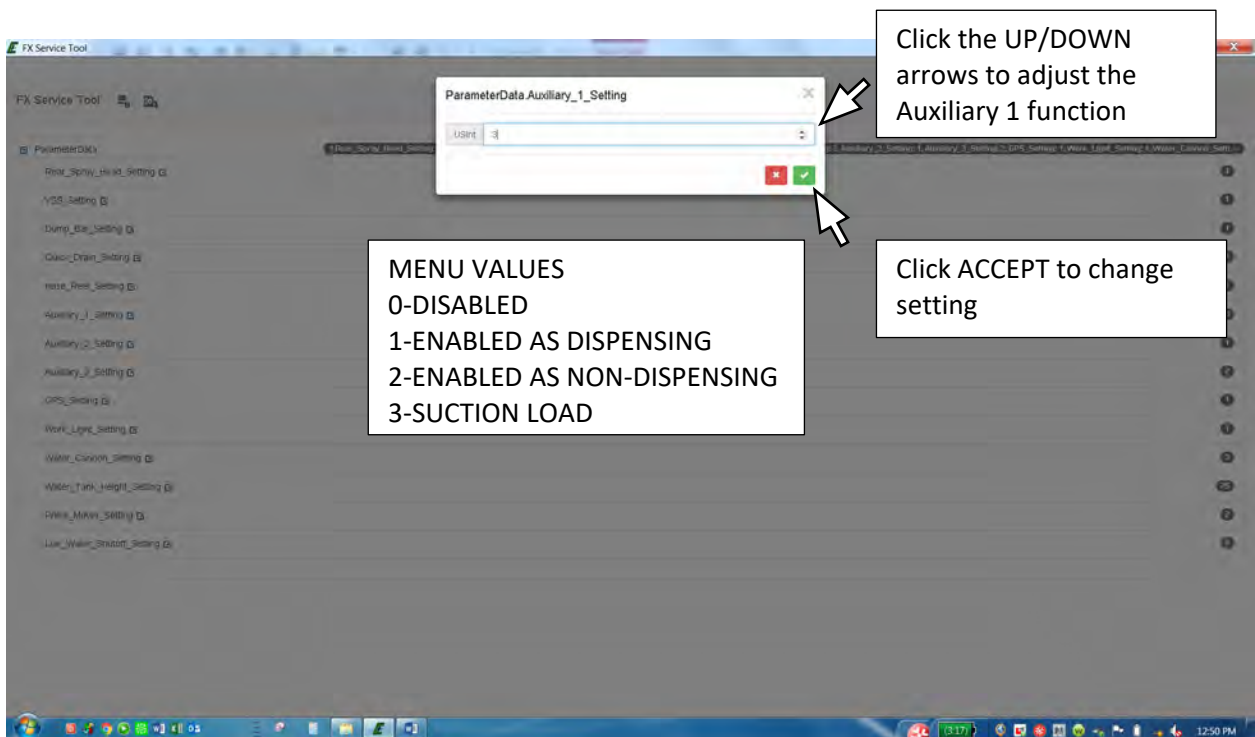
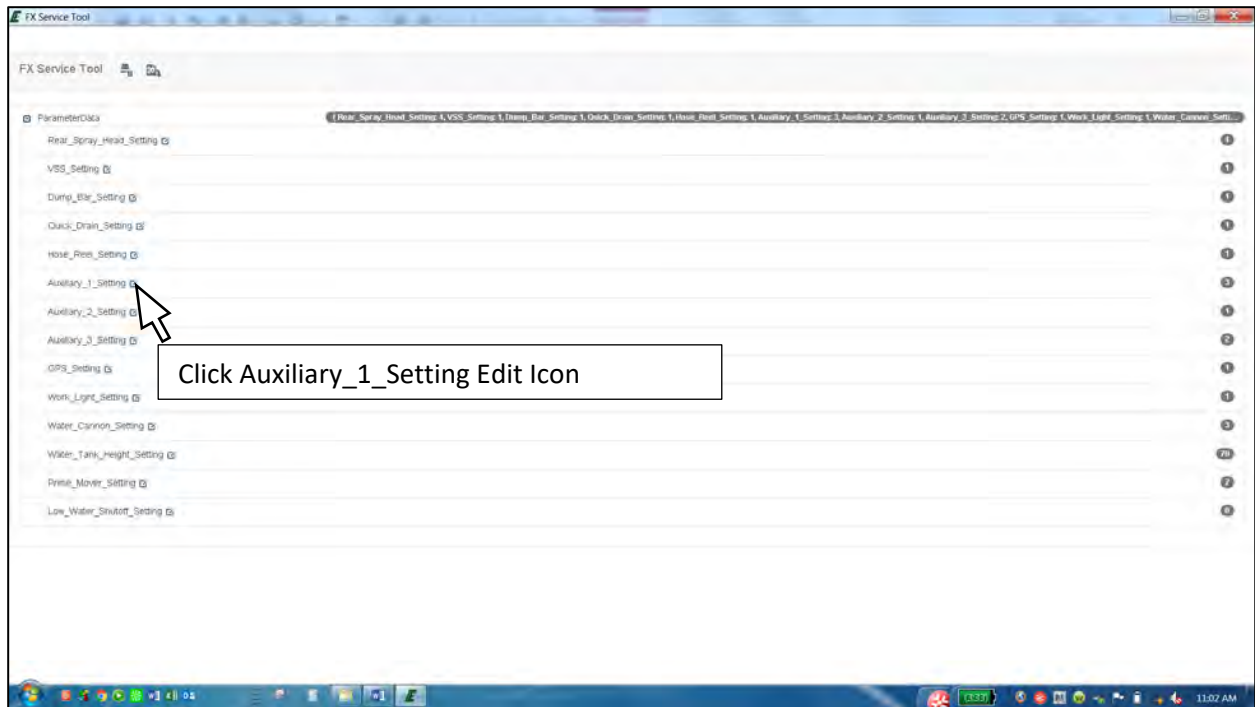




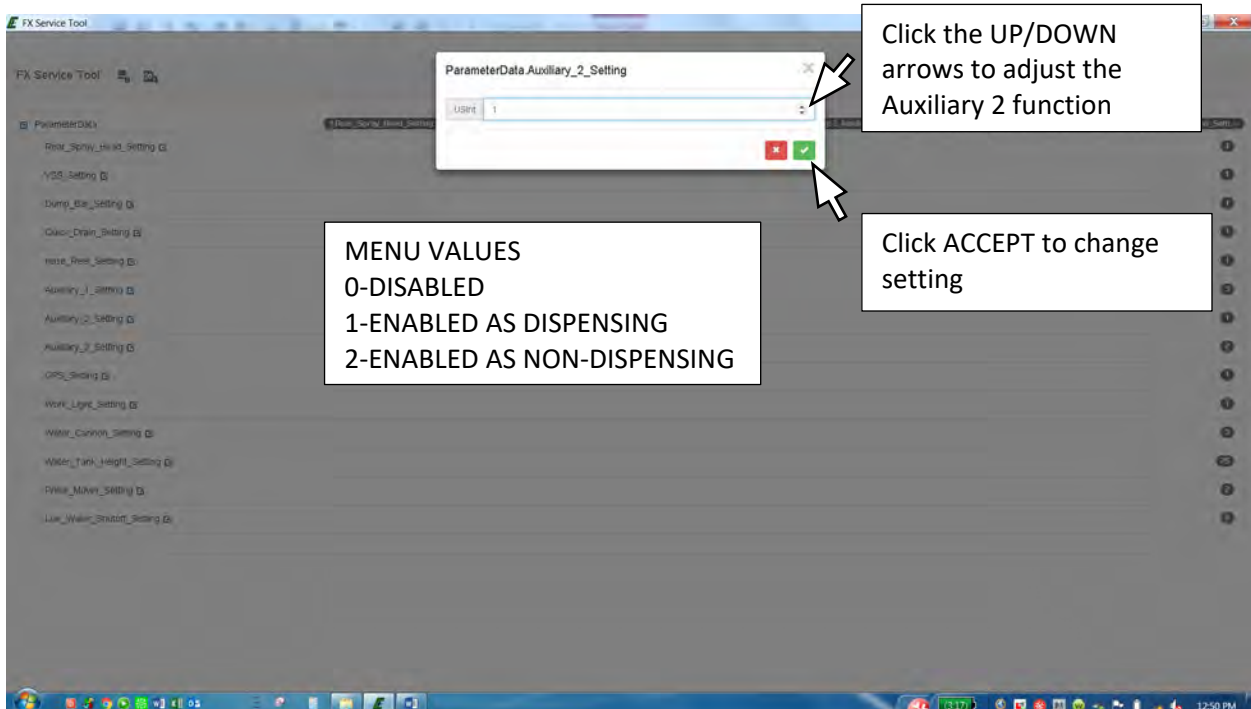
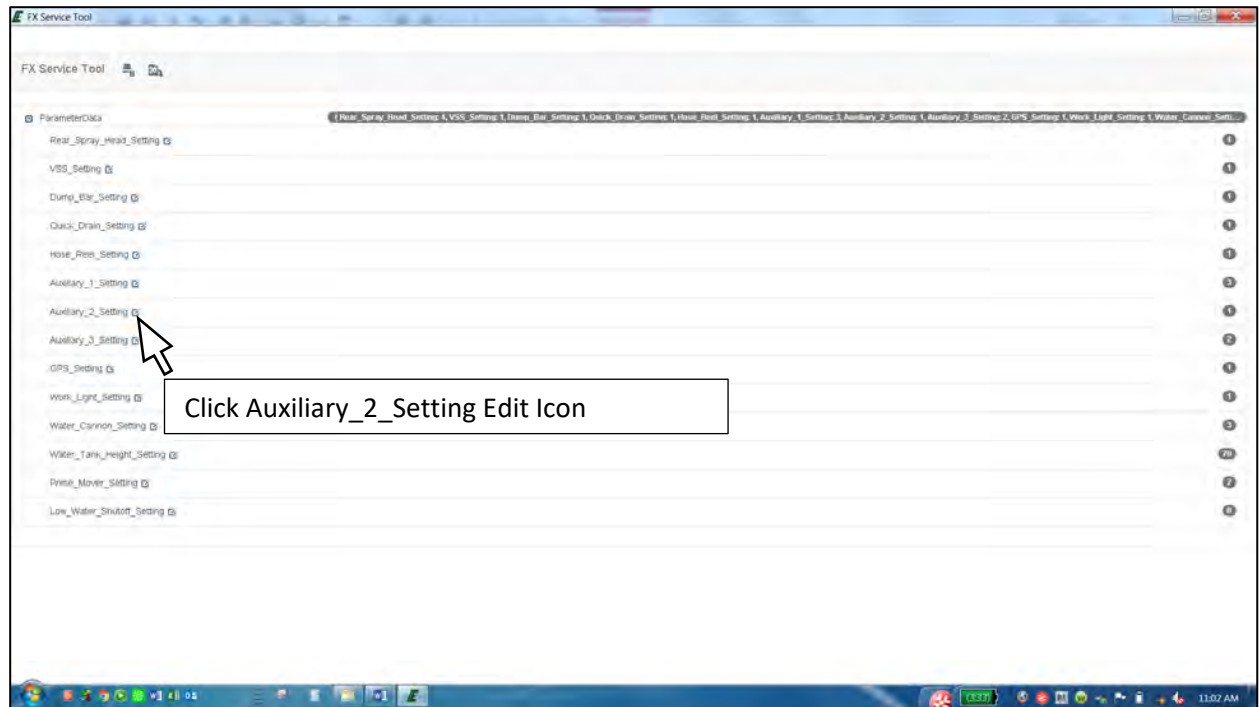
PRODUCT INFORMATION BULLETIN  
MEGA DiSCS 2.0 Spray System Configuration Instructions



PRODUCT INFORMATION BULLETIN  
MEGA DiSCS 2.0 Spray System Configuration Instructions

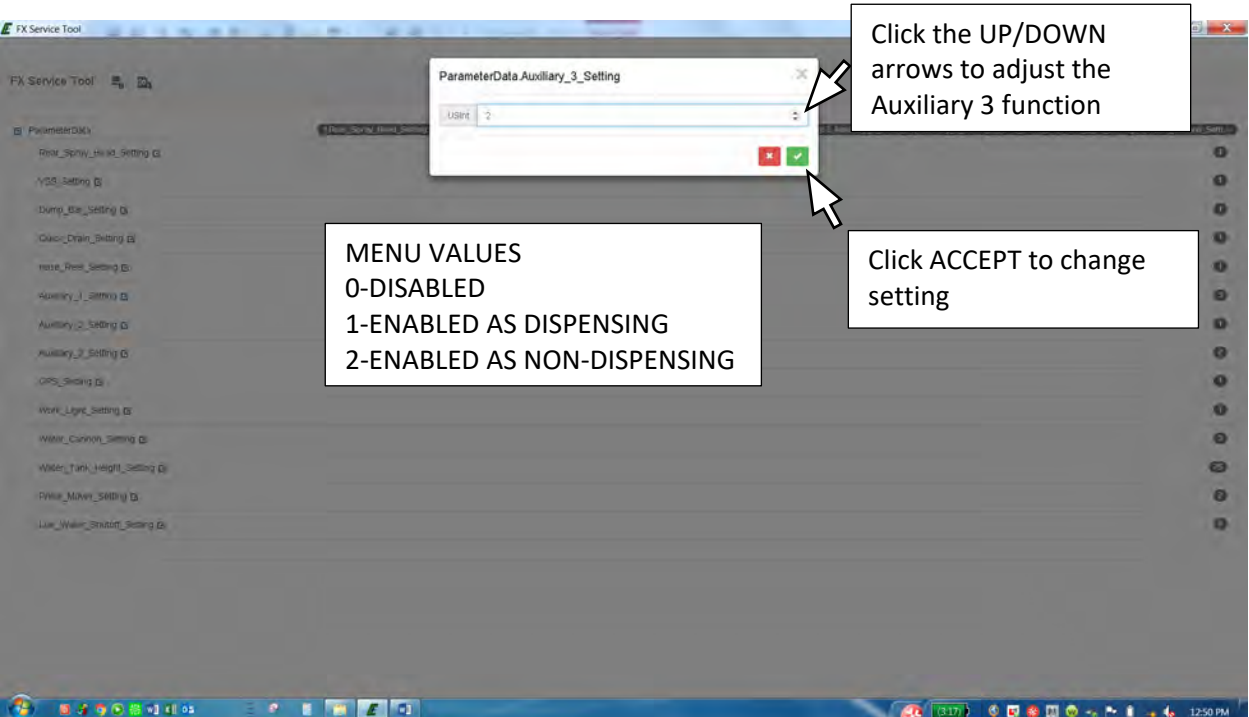
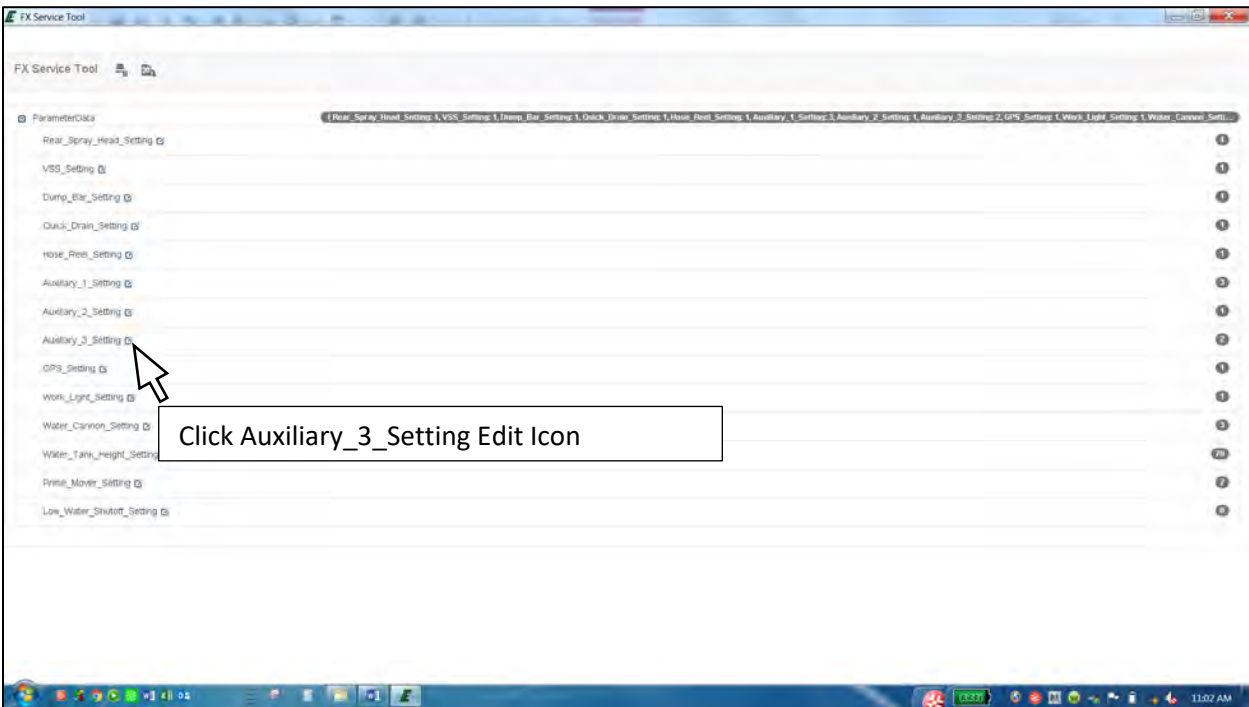


PRODUCT INFORMATION BULLETIN  
MEGA DiSCS 2.0 Spray System Configuration Instructions

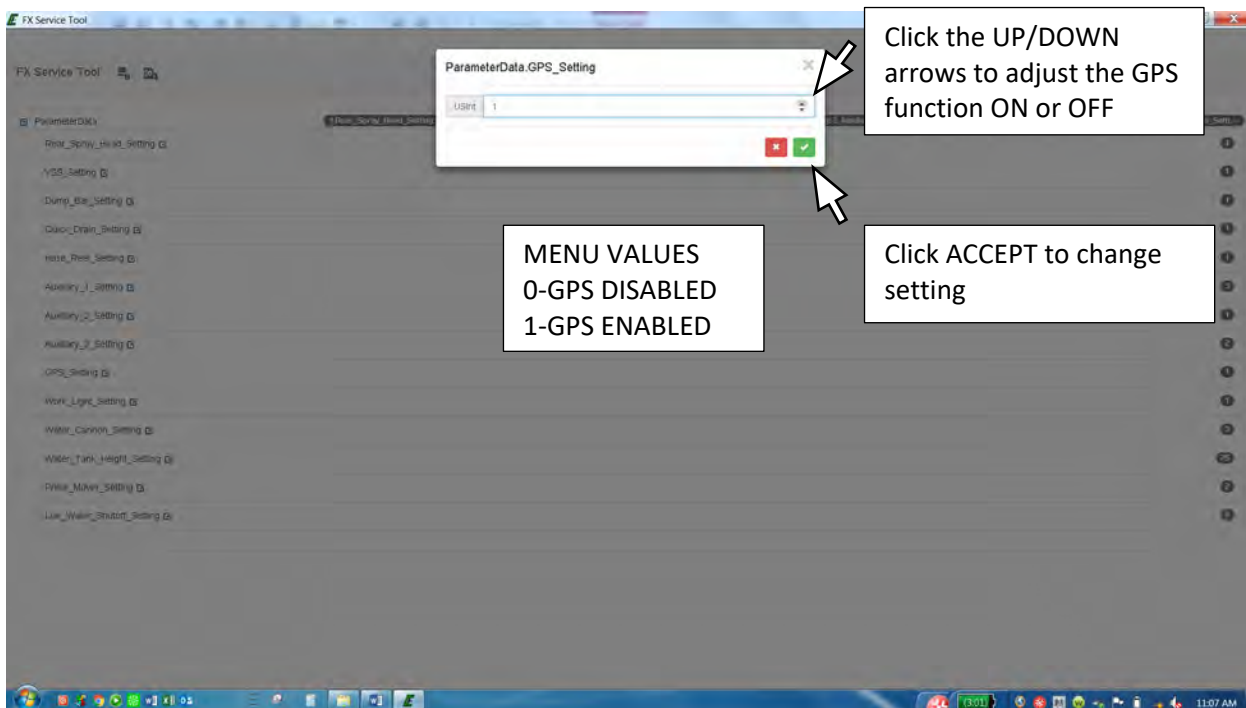
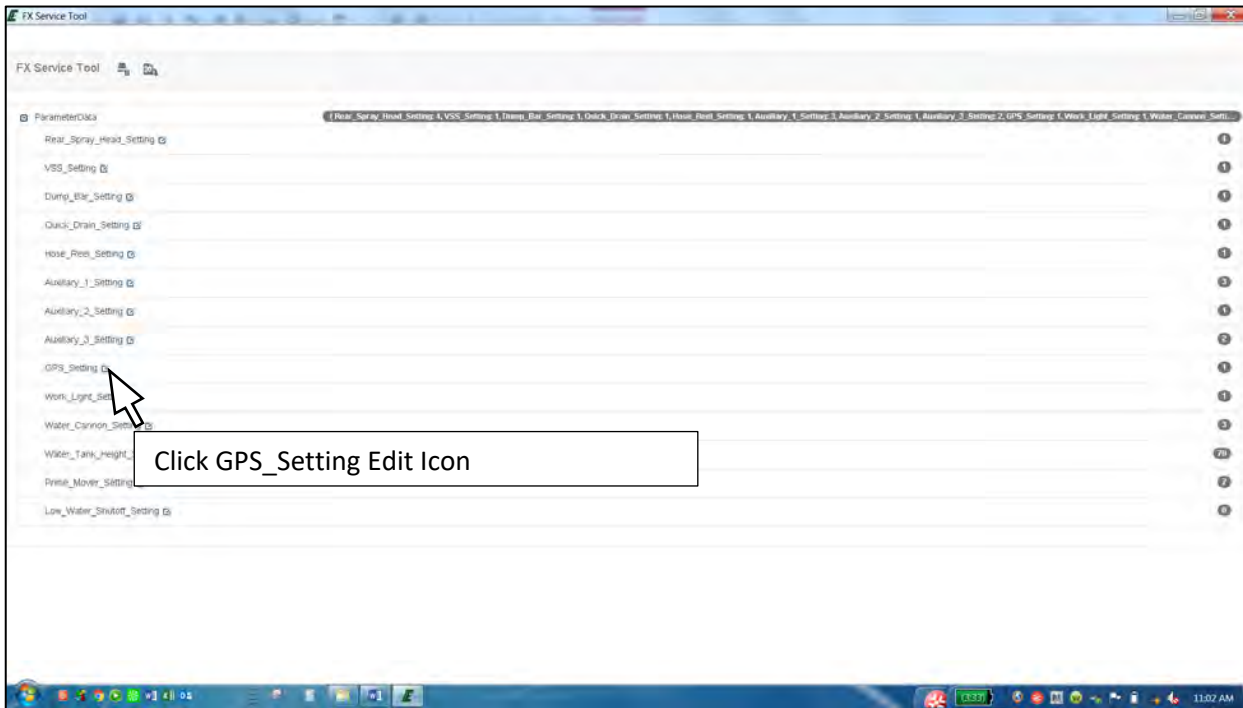




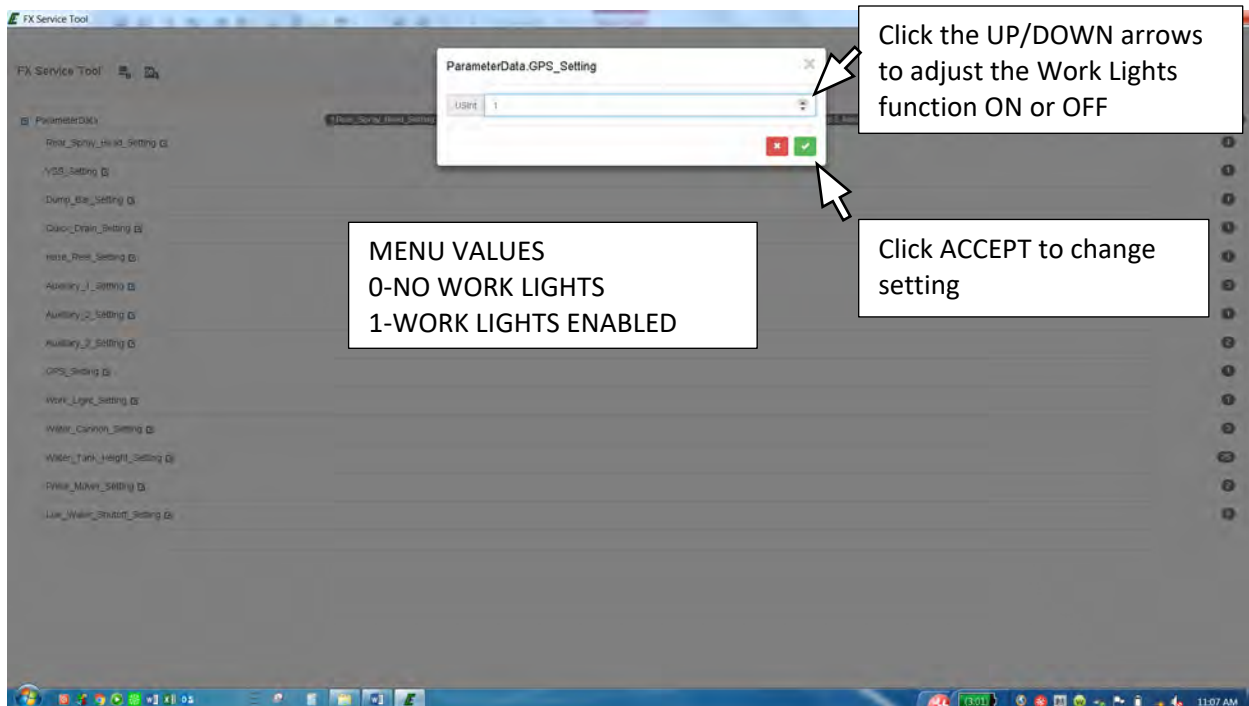
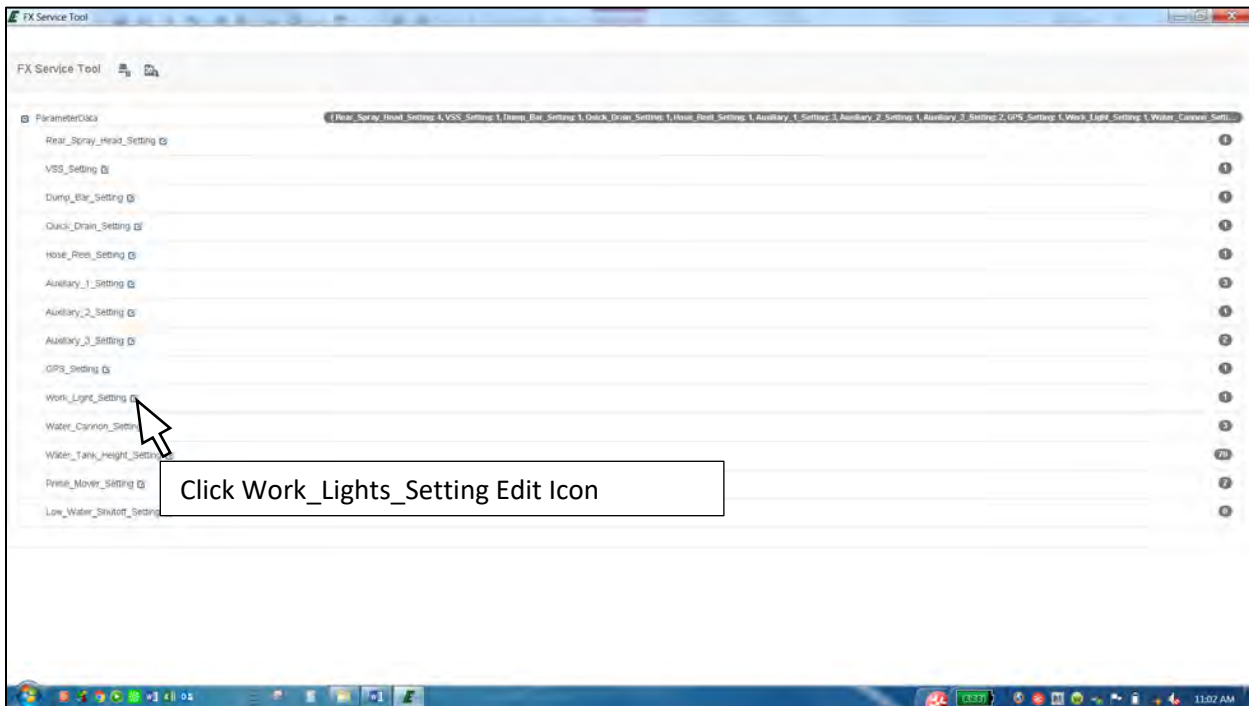
PRODUCT INFORMATION BULLETIN  
MEGA DiSCS 2.0 Spray System Configuration Instructions



PRODUCT INFORMATION BULLETIN  
MEGA DiSCS 2.0 Spray System Configuration Instructions

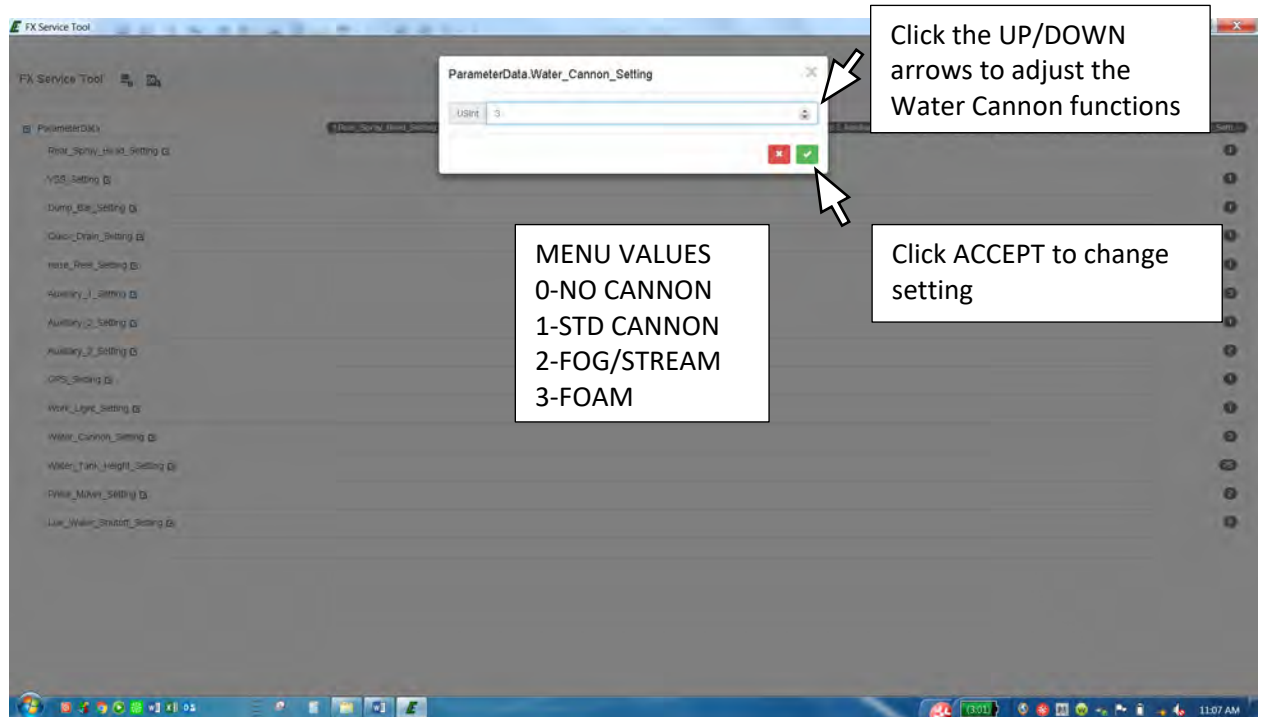
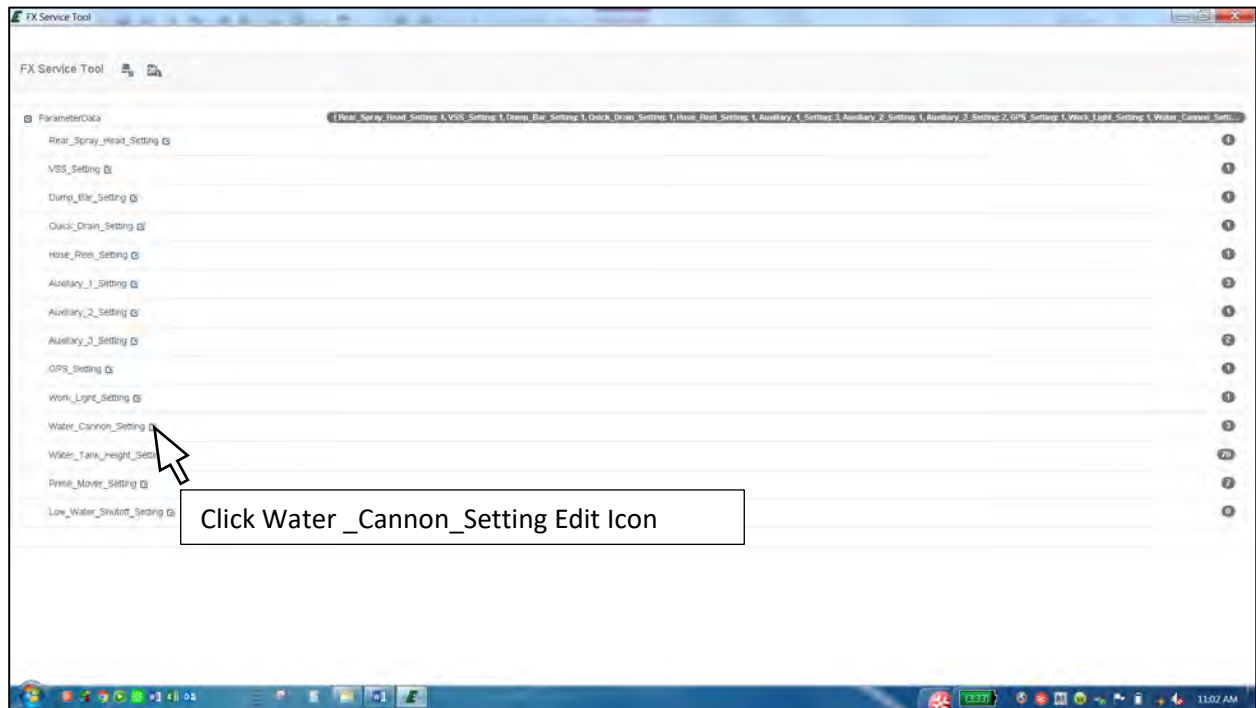


PRODUCT INFORMATION BULLETIN  
MEGA DiSCS 2.0 Spray System Configuration Instructions

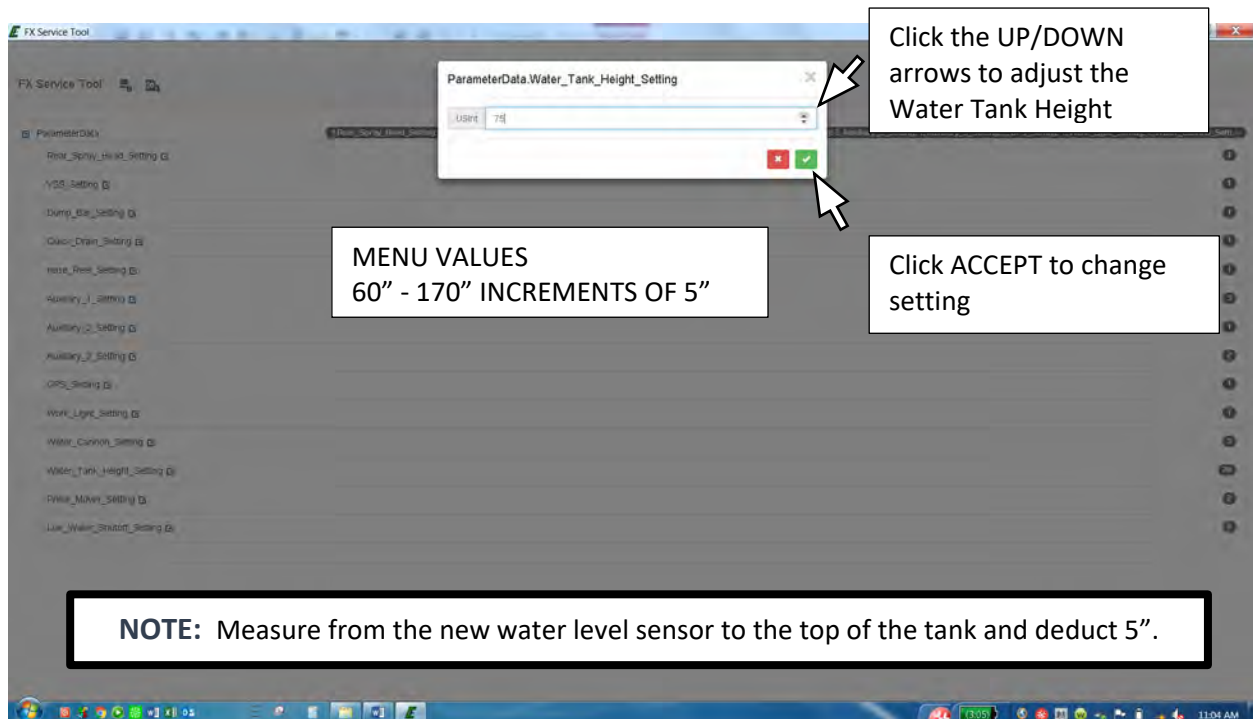
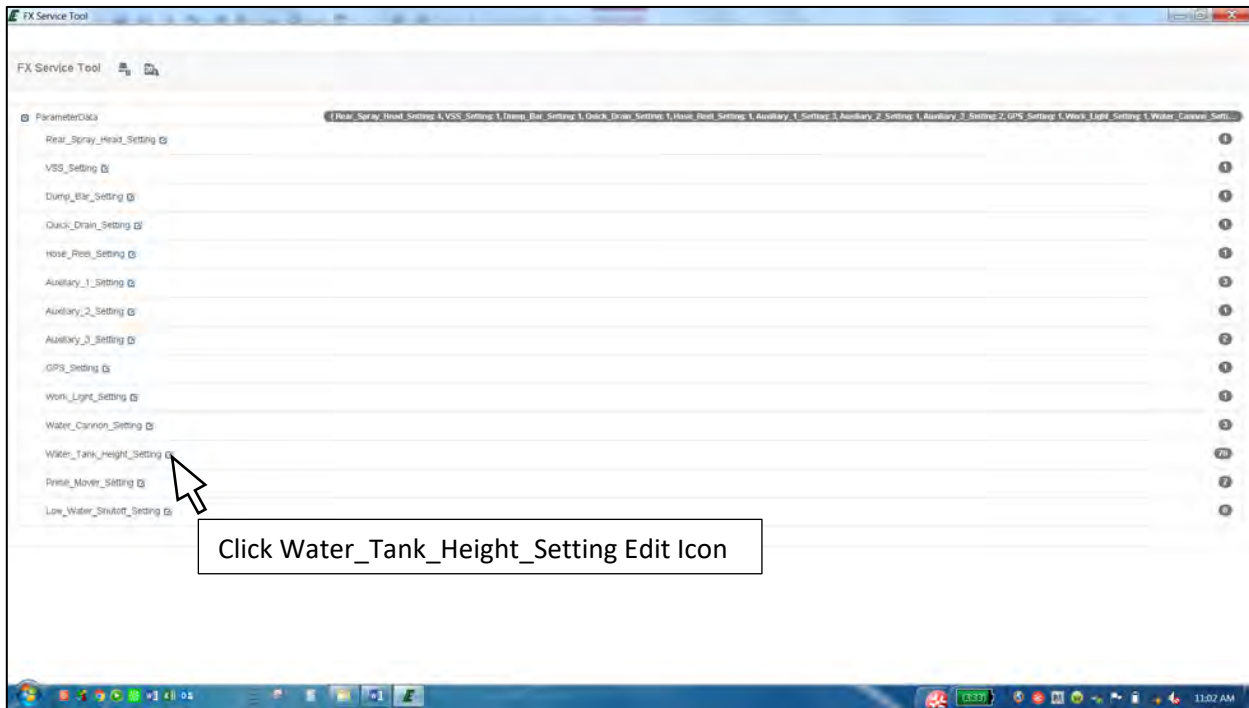




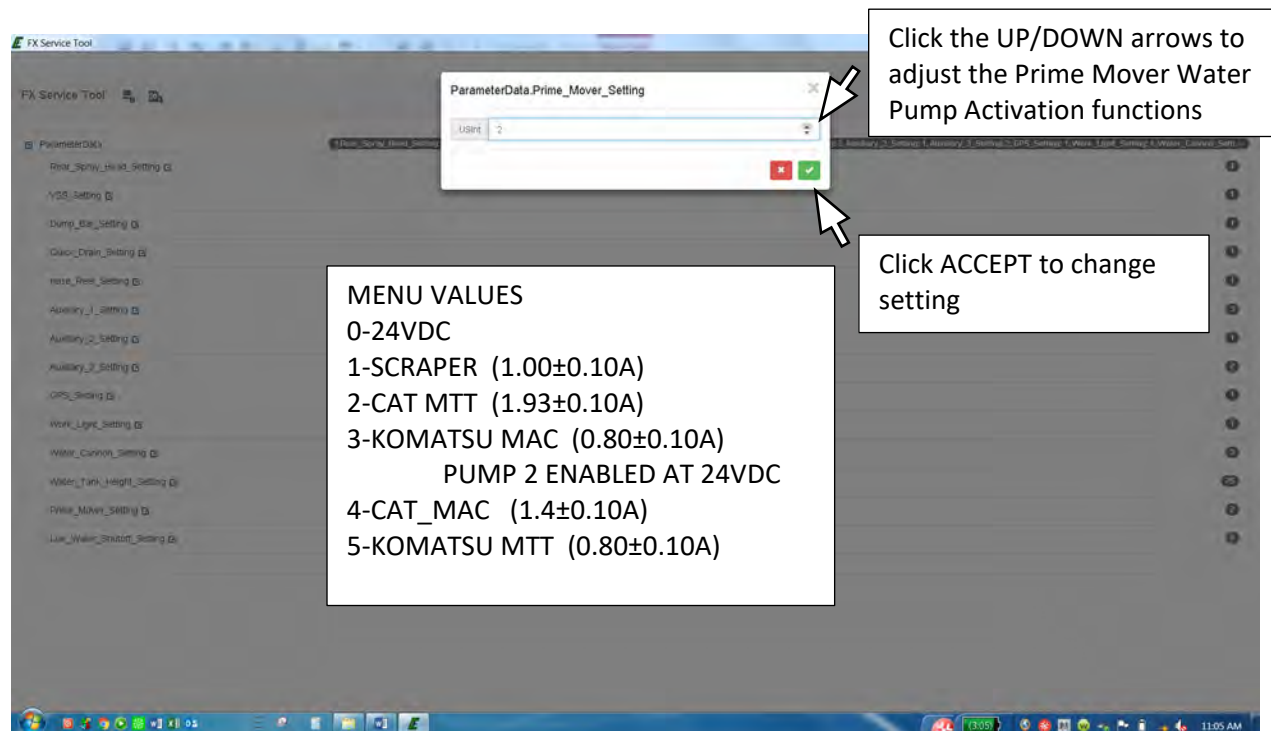
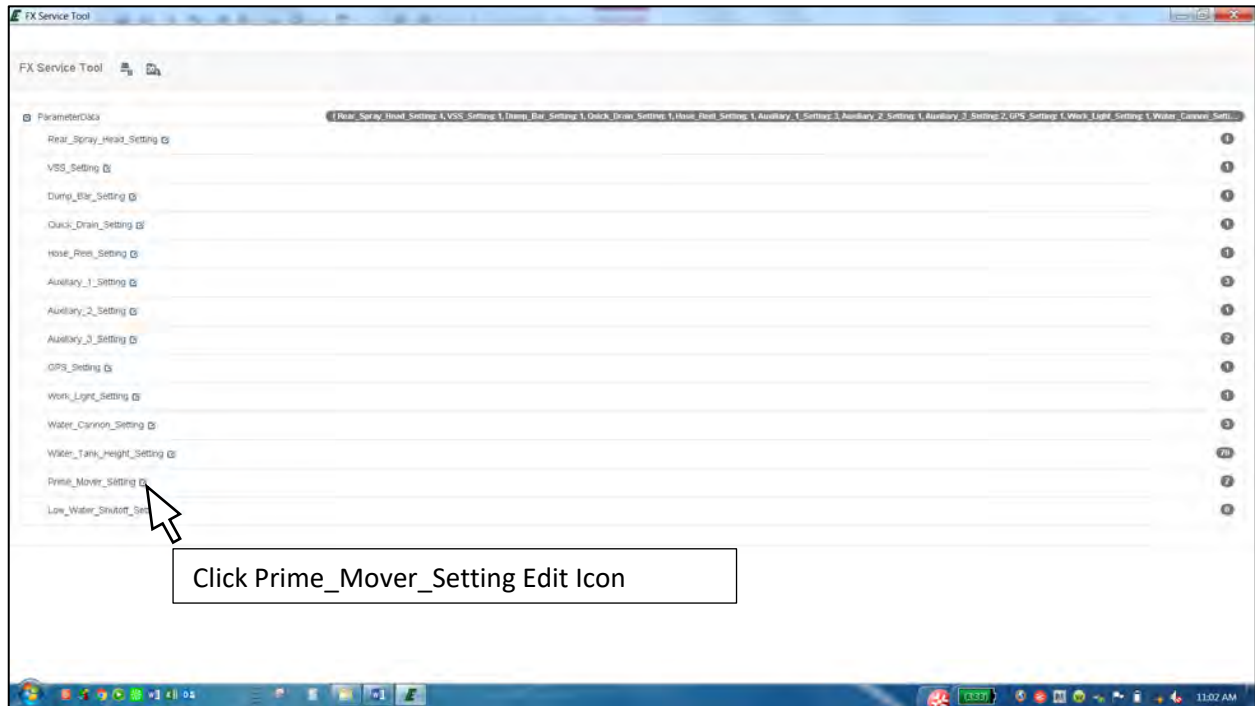
PRODUCT INFORMATION BULLETIN  
MEGA DiSCS 2.0 Spray System Configuration Instructions



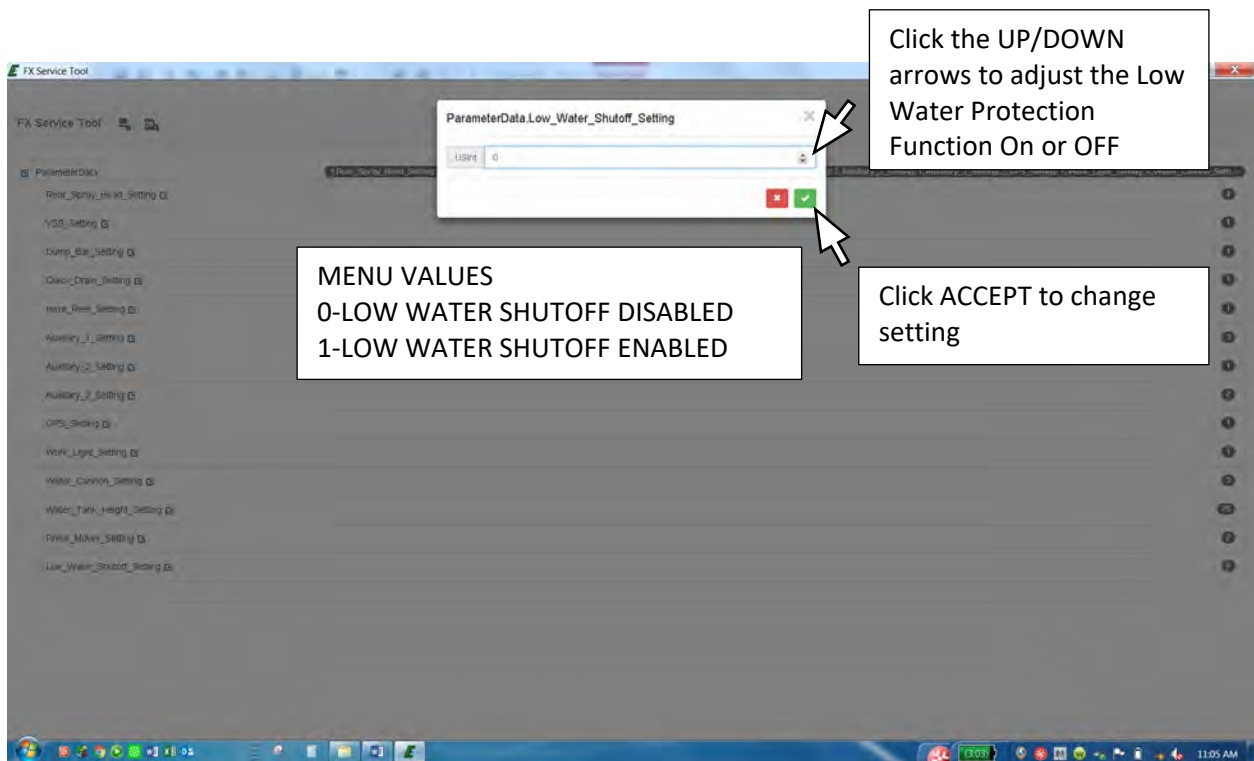
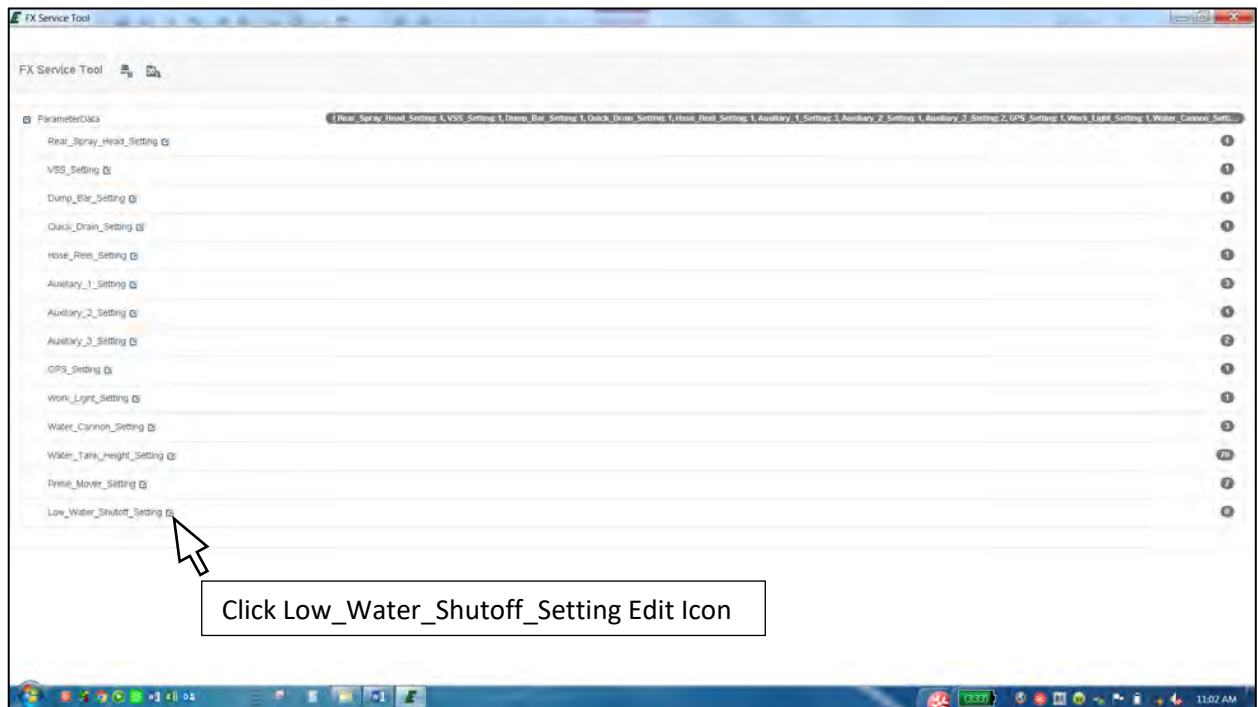
PRODUCT INFORMATION BULLETIN  
MEGA DiSCS 2.0 Spray System Configuration Instructions



PRODUCT INFORMATION BULLETIN  
MEGA DiSCS 2.0 Spray System Configuration Instructions

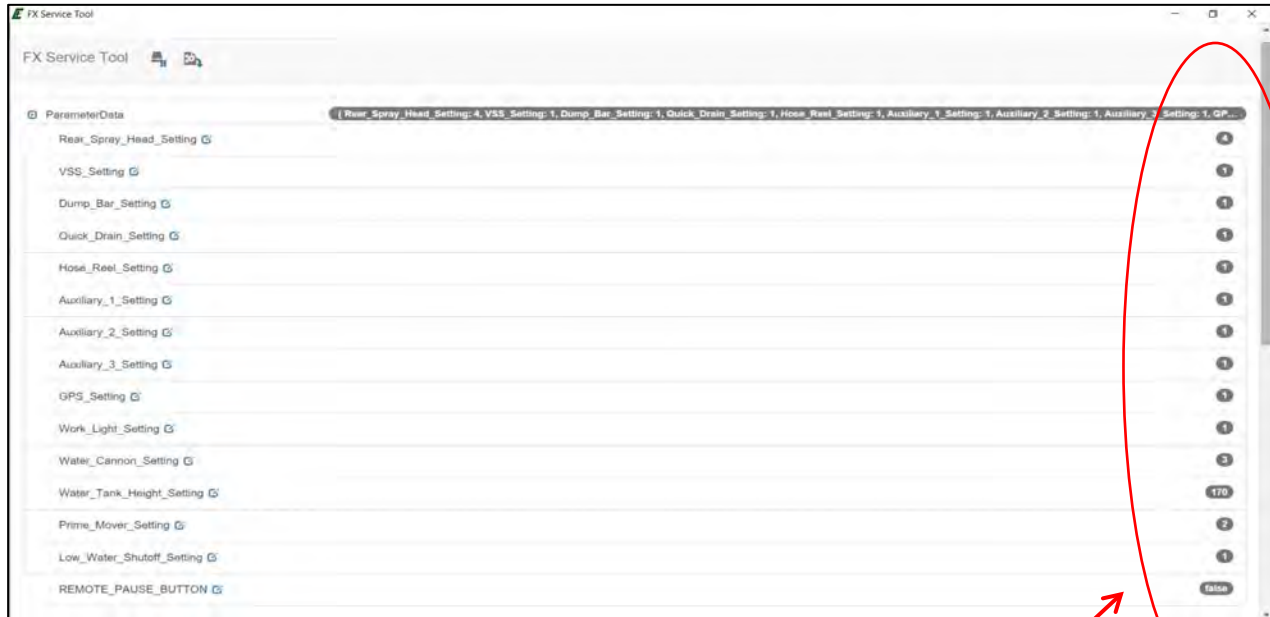


PRODUCT INFORMATION BULLETIN  
MEGA DiSCS 2.0 Spray System Configuration Instructions





PRODUCT INFORMATION BULLETIN  
MEGA DiSCS 2.0 Spray System Configuration Instructions



When the configuration is complete, ensure that all parameters have been changed to the desired settings.

NOTE: REMOTE PAUSE BUTTON MUST BE SET TO **FALSE**

Write and save this configuration line code and file with machine history or write on the provided decal attached inside of the solenoid box for future reference.

If you are having difficulties with the installation, please contact The MEGA Corp. Product Support Group at: U.S. Toll Free 1-800-345-8889 or Direct 1-505-345-2661 or visit our website at [www.megacorpinc.com](http://www.megacorpinc.com) for more contact information.